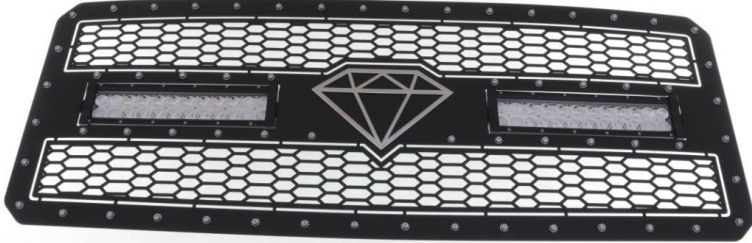





Part#	GR06LFH28L	Application	<b>For 2011-2016 Ford F-250 /F-350 /F-450 /F-550 SD</b>
-------	------------	-------------	---------------------------------------------------------

Parts List	Item	Part Name	QTY	Description	Item	Part Name	QTY	Description
	1	Mesh Grille	1	Stainless steel	4	Philips Screws	22	
	2	L Brackets	22	(large leg, large foot 90°)	5	Flange Nuts	22	
	3	Flat Washer	44		6	Lock Nuts	22	

Install Notes: Overlay  Replacement  Drill  Cut

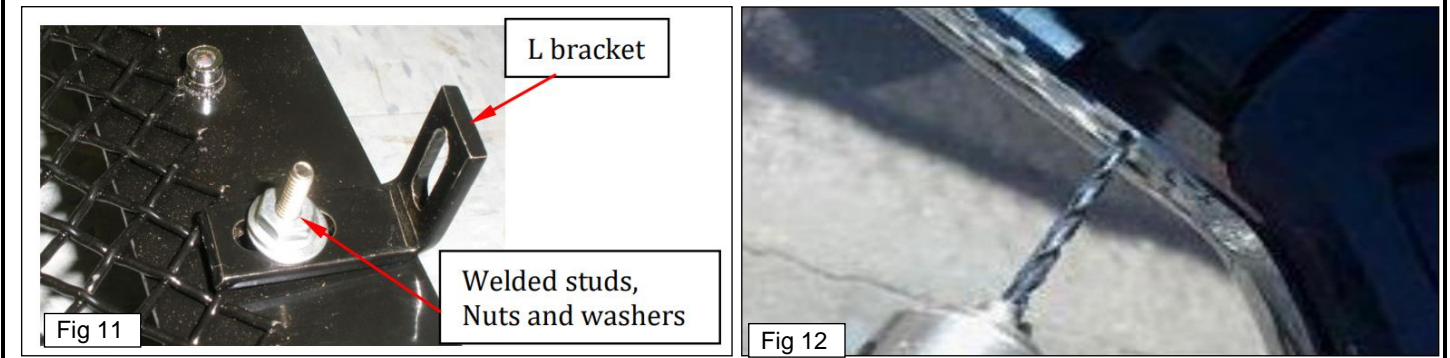
Step	Description	illustration	
1	Identify the grille & hardware with parts list.		
2	Remove the factory grille from the vehicle. There are 4 bolts along the top of the grille under the hood that need to be removed. The top of the grille will be loose, pull the bottom out until the latches pop loose and remove the grille.		
3	With the grille removed from the vehicle, remove the 5 plastic pop clips and one 10/32" bolt from the top plate of the factory grille, remove the top plate (Fig 1).		
4	Now remove 7 plastic pop rivets from along the top edge of the factory grille assembly. Use a pointy object or a small punch to press in the center of the top (Fig 2).		
5	The pop rivet will break and will not be re-used. Remove the pop rivet with a pair of pliers (Fig3).		
			
6	Now you will remove the 2 chrome trim bars from the front of the factory grille. From the backside of the grille, unlatch the 7 plastic latches holding the chrome trim bars secure with a flat screwdriver (fig 4).		
7	Pull the chrome trim bars off the grille. Now you will separate the front and back section of the factory grille. On the backside of the factory grille, there are 6 plastic latches along the top, 6 along the bottom, and 2 on each side, unlatch these with a flat screwdriver and separate the front and back sections of the factory grille (Fig 5).		

The instruction here is for your reference only. You may need to bend the grille a little bit to adjust to fit. We strongly recommend the professional installer for best result. We are not responsible for any damage caused by the installation. Thank you for choosing our product!

Part#	GR06LFH28L	Application	For 2011-2016 Ford F-250 /F-350 /F-450 /F-550 SD
8	Remove the Ford logo, there are 4 plastic latches and 1 nut holding it to the grille (Fig 6).		
<div style="display: flex; justify-content: space-around;"> <div data-bbox="198 352 591 655"> <p>Fig 4</p> </div> <div data-bbox="604 352 997 655"> <p>Fig 5</p> </div> <div data-bbox="1010 352 1403 655"> <p>Fig 6</p> </div> </div>			
9	<p>If you want to remount the ford logo on the new grille, cut the black plastic tabs off from the backside of the logo and sand it smooth. Now you need to remove the 2 side sections from the black section of the factory grille (Fig 7). There are 9 plastic latches on the backside of each section, use a flat screwdriver to unlatch them and remove the side sections. Now reassemble to black plastic back section and the front grille section minus the side pieces and apply masking tape to the painted/chrome grille shell outer ring to prevent any scratches during cutting (Fig 8).</p>		
<div style="display: flex; justify-content: space-around;"> <div data-bbox="354 873 792 1205"> <p>Fig 7</p> </div> <div data-bbox="805 873 1243 1205"> <p>Fig 8</p> </div> </div>			
10	<p>Now you need to cut out the inner section of the black grille section. You will cut around the inner edge of the black section as marked in (Fig 9).The 4 corner areas and the right and left sides will not be cut out, make sure to leave the areas marked in (Fig 10) attached to the black grille section on both the right and left sides. Sand all the cut areas smooth with a sanding wheel.</p>		
<div style="display: flex; justify-content: space-around;"> <div data-bbox="165 1339 951 1671"> <p>Fig 9</p> </div> <div data-bbox="971 1339 1438 1671"> <p>Fig 10</p> </div> </div>			
11	<p>Secure the L Brackets(22) to the studs which were welded on the rear of the grille with flange nuts and washers. (Fig 11).</p>		

The instruction here is for your reference only. You may need to bend the grille a little bit to adjust to fit. We strongly recommend the professional installer for best result. We are not responsible for any damage caused by the installation. Thank you for choosing our product!

Part#	GR06LFH28L	Application	<b>For 2011-2016 Ford F-250 /F-350 /F-450 /F-550 SD</b>
-------	------------	-------------	---------------------------------------------------------



12	Use the mesh grille as a template; mark the holes location of L brackets on the rear of the mesh grille to the OEM Grille shell. Drill holes on the shell according to the marks(Fig 12).
13	Tighten the mesh grille to the shell with the screws through the tabs of brackets and holes on the shell and secure with flange nuts and washers.
14	Installation completed.

The instruction here is for your reference only. You may need to bend the grille a little bit to adjust to fit. We strongly recommend the professional installer for best result. We are not responsible for any damage caused by the installation. Thank you for choosing our product!