

791674



Installation Instructions
Front Bolt-On/Rugged Look Fender Flares
Chevy Silverado 1500,2500,3500 (14-On) FF709

Important: Please read instructions entirely before installing this product.

Hardware Included	QTY
Extrusion	13.5ft
U CLIP .6mm	2
Large CLIP .9mm	4
Screws 12g	4

Hardware Included	QTY
Alcohol Towelette	2
Abrasive resistant tape	4
Washers	4

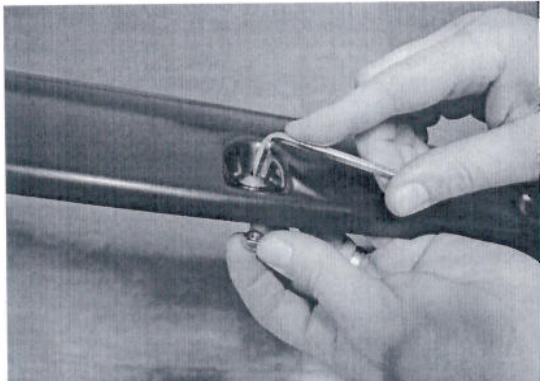
Bolt Kit Included (Bolt-On look flare only)	QTY
Nuts	20
Allen Key Bolts	20

Ensure that both left and right hand front Fender Flares suit the profile of the vehicle. Note the areas where the Fender Flares come in contact with the vehicle. NOTE: Before fitting Fender Flares remove any moldings, strips or existing flares from the wheel arch. If there is a body side molding, mark where the molding is to be cut, alternatively the Fender Flare can be cut to go around the molding. Be sure to allow enough room for the extrusion. **No drilling of vehicle is required for Bolt-On Look Fender Flares. This is a non-drill product.**

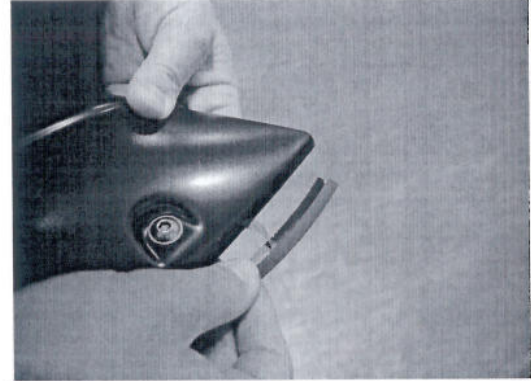
***For Rugged look flares begin installation at STEP 2.**

***PRIOR TO ANY PAINTING & INSTALLATION, PRODUCT SHOULD BE THOROUGHLY INSPECTED FOR ALL COMPONENTS LISTED ABOVE. PRODUCT SHOULD ALSO BE TEST FITTED PRIOR TO ANY PAINTING & INSTALLATION. PLEASE CONTACT EGR IF YOU HAVE ANY FITMENT QUESTIONS AND OR MISSING COMPONENTS.**

PAINTING INSTRUCTIONS – If Fender Flares are being painted; do not install edge extrusion until painting is complete. Prior to painting, clean all surfaces to be painted using clean water and a mild detergent, do not use lacquer thinner or any solvent based products. Wipe completely dry. Best results will be achieved by wiping the areas to be painted with a tack rag just prior to painting. Most automotive paints can be applied directly to the Fender Flares, however some may require a primer (check paint manufacturer specifications). Good adhesion will be achieved without sanding. Select a paint (and primer if necessary) that is suitable for rigid plastics PMMA (Acrylic). If using a paint system that requires baking, do not expose the product to temperatures above 70°C (158°F). Do not fit the extrusion or any of the hardware to the Fender Flares until the paint is completely dry.



STEP 1: Attach the 10 bolts and nuts to each Fender Flare using a 3/16" Allen key and a 1/2" wrench/socket. (wrench /socket and Allen key not supplied). Ensure inside of Fender Flares where the rubber seal is attached is clean, using the alcohol wipes provided. Wipe away any residue with a dry clean cloth.



STEP 2: Attach the included rubber seal to the Fender Flares. Peel back 2" of the adhesive backing and position on the Fender Flare. Attach the seal to the Fender Flare, peeling back a few inches at a time. Ensure pressure is used to secure rubber seal to Fender Flare edge. Attach rubber seal along all areas the Fender Flare will make contact with the vehicle body.

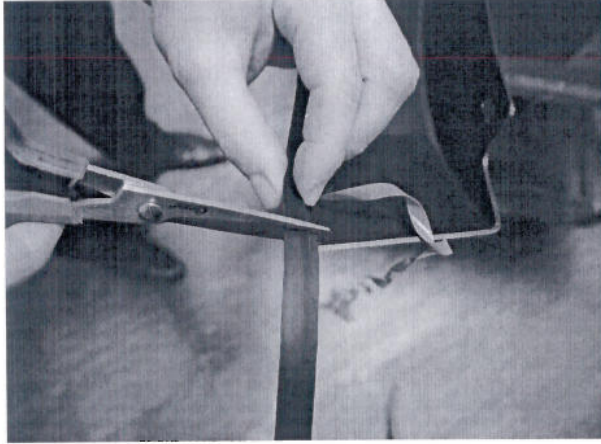
For Technical Support/Warranty Information please call 800-757-7075

EGR Inc., 4000 East Greystone Drive, Ontario, CA 91761



Installation Instructions
Front Bolt-On/Rugged Look Fender Flares
Chevy Silverado 1500,2500,3500 (14-On)

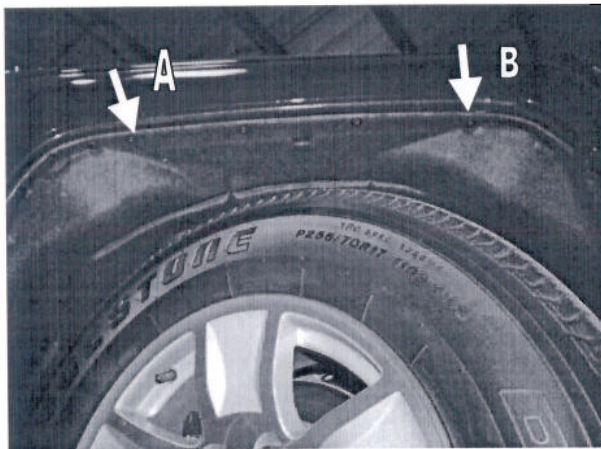
FF709



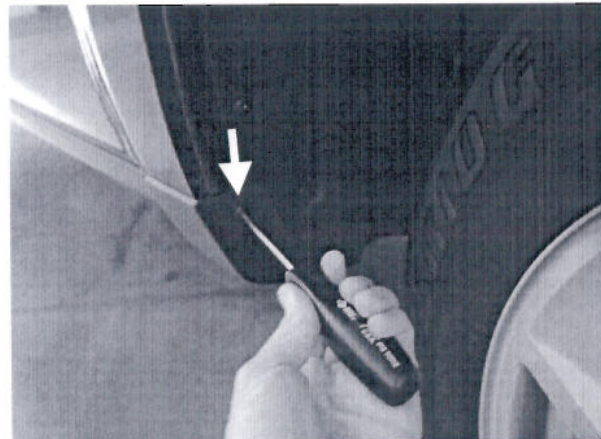
STEP 3: Trim any excess rubber seal and discard.



STEP 4: Clean the body areas where the Fender Flares will make contact. Ensure fenders are dry prior to install. Turn tires outward for Fender Flare installation.



STEP 5: Place Fender Flare on the vehicle into the position of best fit. Note where the slots in Fender Flare at positions **A** and **B** align with the existing screws in the vehicle wheel arch. Remove Fender Flare. Remove the existing vehicle screws in location **A** and **B** using #15 Torx head screwdriver. Maintain screws for re-install.



STEP 6: Using #15 Torx head screwdriver remove upper screw from the front factory mudguard. Maintain screws for re-install.

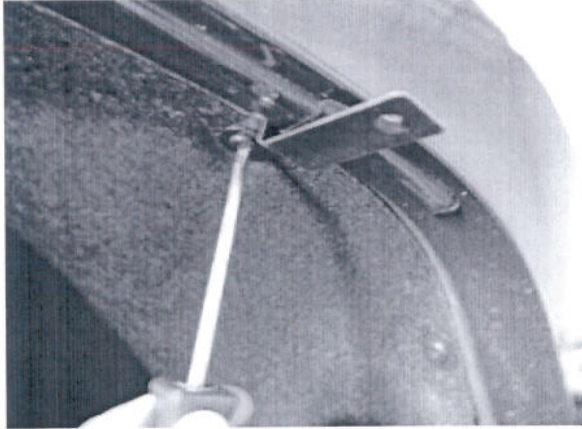
For Technical Support/Warranty Information please call 800-757-7075

EGR Inc., 4000 East Greystone Drive, Ontario, CA 91761

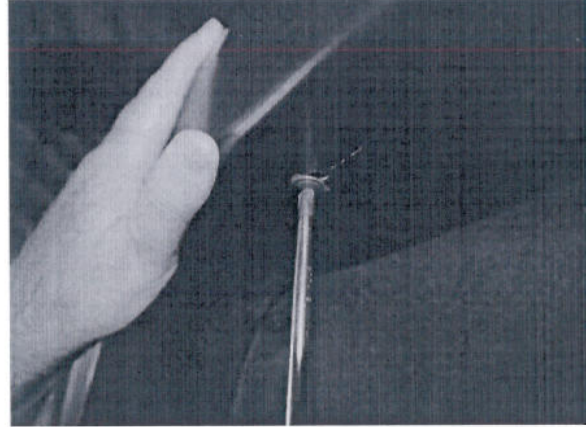


Installation Instructions
Front Bolt-On/Rugged Look Fender Flares
Chevy Silverado 1500,2500,3500 (14-On)

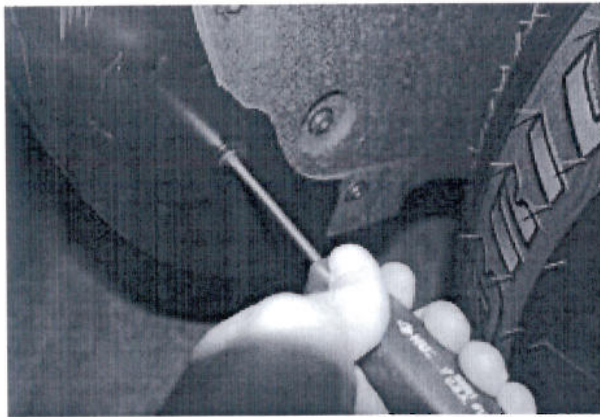
FF709



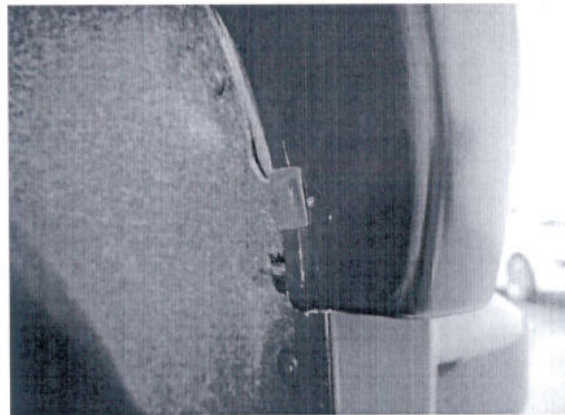
STEP 7: Apply clear tape to the inside edge of the fender wheel arch in front of positions **A** and **B** (step 5) over mastic sealant. Install the large brackets in positions **A** and **B** (step 5) aligning the slot in the bracket with the vacant holes from the factory screws in the vehicle wheel arch. Ensure clips are positioned over the clear tape. Re-install the factory screws in location **A** and **B** using a #15 Torx head screwdriver.



STEP 8: Place Fender Flare on the vehicle into the position of best fit so the slots in position **A** and **B** are over the holes in the front end of large clips. Ensure bottom rear slot in Fender Flare is located over the vacate hole in the factory mudguard. Apply upward tension on Fender Flare to the vehicle fender when installing the screws and washers provided into the clips in position **A** and **B** using a Phillips head screwdriver.



STEP 9: Re-install factory screw in the mudguard using #15 Torx head screwdriver through the slot in the Fender Flare.



STEP 10: To secure the front slot in the Fender Flare to the body, take the black metal clip and slide it over the Fender Flare and the inner wheel arch lip. Position the clip so that the barb in the clip locates in the slot of the Fender Flare. Ensure all fixing points are tight and secure and that the rubber seal is flush neatly against the vehicle body.

For Technical Support/Warranty Information please call 800-757-7075

EGR Inc., 4000 East Greystone Drive, Ontario, CA 91761



Installation Instructions

Rear Bolt-On/Rugged Look Fender Flares

Chevy Silverado 1500,2500,3500 (14-On)

FF710

Important: Please read instructions entirely before installing this product.

Hardware Included	QTY
Extrusion	17.5ft
U CLIP .6mm	10
Alcohol Towelette	2
E CLIP .6mm	2

Hardware Included	QTY

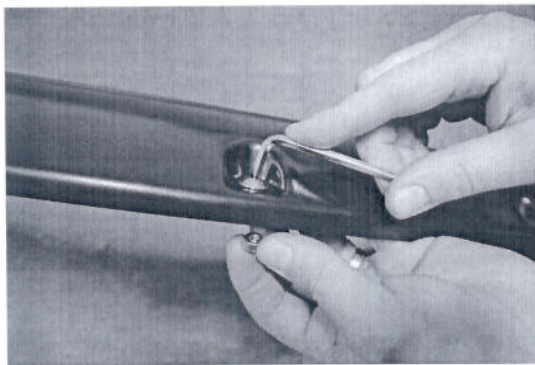
Bolt Kit Included (Bolt-On look flare only)	QTY
Nuts	22
Allen Key Bolts	22

Ensure that both left and right hand rear Fender Flares suit the profile of the vehicle. Note the areas where the Fender Flares come in contact with the vehicle. NOTE: Before fitting Fender Flares remove any moldings, strips or existing flares from the wheel arch. If there is a body side molding, mark where the molding is to be cut, alternatively the Fender Flare can be cut to go around the molding. Be sure to allow enough room for the extrusion. **No drilling of vehicle is required for Bolt-On Look Fender Flares. This is a non-drill product.**

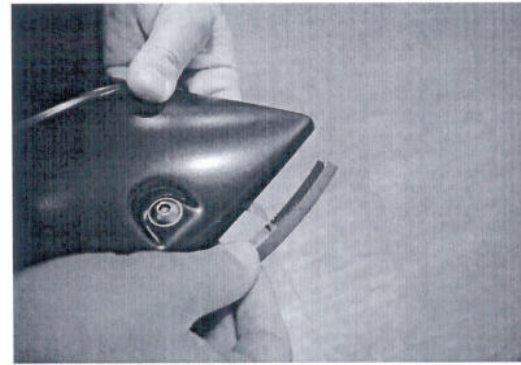
***For Rugged look flares begin installation at STEP 2.**

***PRIOR TO ANY PAINTING & INSTALLATION, PRODUCT SHOULD BE THOROUGHLY INSPECTED FOR ALL COMPONENTS LISTED ABOVE. PRODUCT SHOULD ALSO BE TEST FITTED PRIOR TO ANY PAINTING & INSTALLATION. PLEASE CONTACT EGR IF YOU HAVE ANY FITMENT QUESTIONS AND OR MISSING COMPONENTS.**

PAINTING INSTRUCTIONS – If Fender Flares are being painted; do not install edge extrusion until painting is complete. Prior to painting, clean all surfaces to be painted using clean water and a mild detergent, do not use lacquer thinner or any solvent based products. Wipe completely dry. Best results will be achieved by wiping the areas to be painted with a tack rag just prior to painting. Most automotive paints can be applied directly to the Fender Flares, however some may require a primer (check paint manufacturer specifications). Good adhesion will be achieved without sanding. Select a paint (and primer if necessary) that is suitable for rigid plastics PMMA (Acrylic). If using a paint system that requires baking, do not expose the product to temperatures above 70°C (158°F). Do not fit the extrusion or any of the hardware to the Fender Flares until the paint is completely dry.



STEP 1: Attach the 11 bolts and nuts to each Fender Flare using a 3/16" Allen key and a 1/2" wrench/socket. (wrench /socket and Allen key not supplied). Ensure inside of Fender Flares where the rubber seal is attached is clean, using the alcohol wipes provided. Wipe away any residue with a dry clean cloth.



STEP 2: Attach the included rubber seal to the Fender Flares. Peel back 2" of the adhesive backing and position on the Fender Flare. Attach the seal to the Fender Flare, peeling back a few inches at a time. Ensure pressure is used to secure rubber seal to Fender Flare edge. Attach rubber seal along all areas the Fender Flare will make contact with the vehicle body. Trim excess rubber seal.

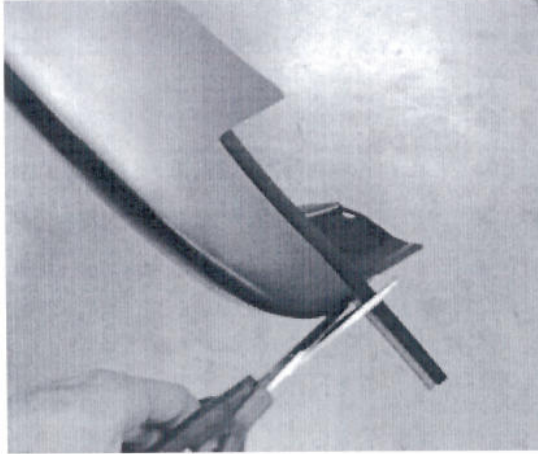
For Technical Support/Warranty Information please call 800-757-7075

EGR Inc., 4000 East Greystone Drive, Ontario, CA 91761



Installation Instructions
Rear Bolt-On/Rugged Look Fender Flares
Chevy Silverado 1500,2500,3500 (14-On)

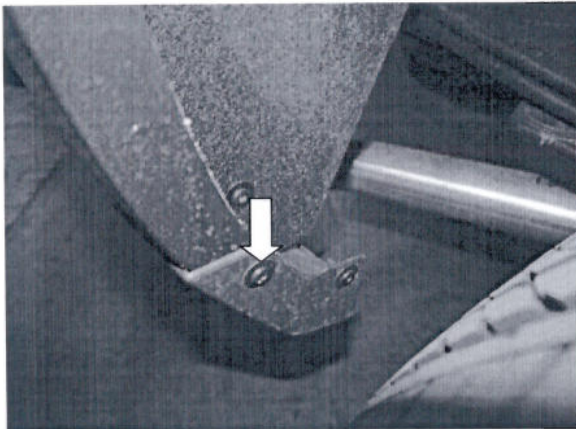
FF710



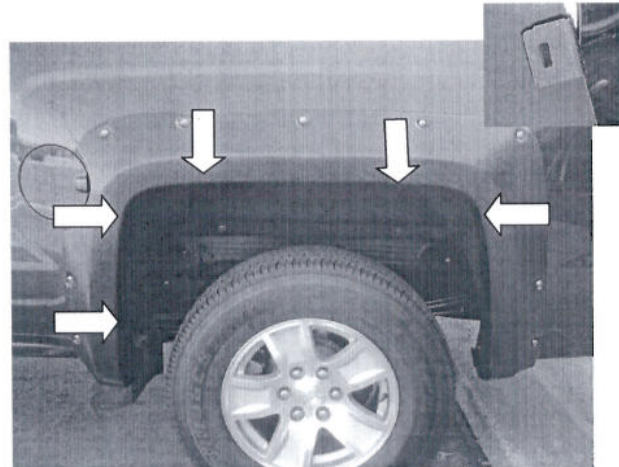
STEP 3: Attach rubber seal to the bottom front corner of Fender Flares. Peel back 1" of the adhesive backing and position on the Fender Flare. Attach the seal to the Fender Flare, ensure pressure is used to secure rubber seal to Fender Flare edge. Trim excess rubber seal and discard.



STEP 4: Clean the body areas where the Fender Flares will make contact. Ensure fenders are dry prior to install.



STEP 5: Using #15 Torx head screwdriver remove upper screw from the rear factory mudguard. Maintain screws for re-install.



STEP 6: To secure the Fender Flare to the body, apply upward tension on Fender Flare to the vehicle fender when installing the black metal clips. Slide the clips over the Fender Flare and the inner wheel arch lip in the five locations shown. Position the clip so that the barb in the clip locates in the slot of the Fender Flare.

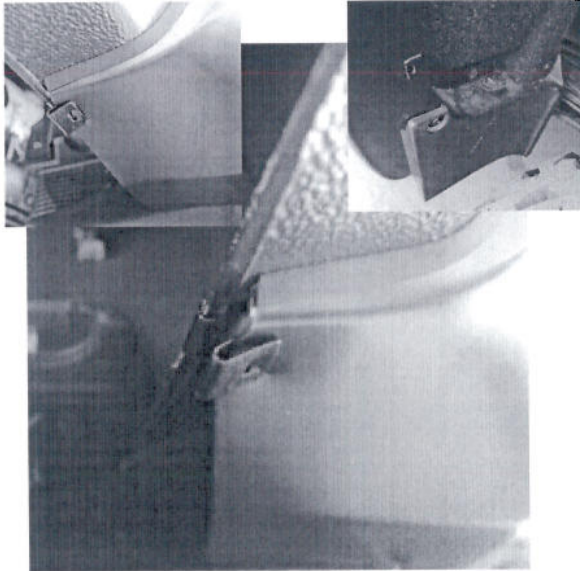
For Technical Support/Warranty Information please call 800-757-7075

EGR Inc., 4000 East Greystone Drive, Ontario, CA 91761

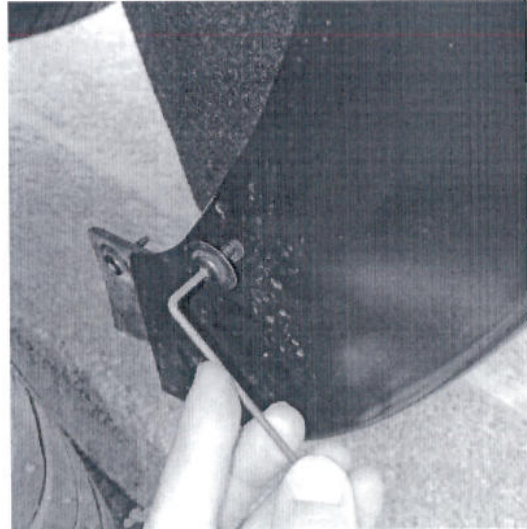


Installation Instructions
Rear Bolt-On/Rugged Look Fender Flares
Chevy Silverado 1500,2500,3500 (14-On)

FF710



STEP 7: Slide the top edge of rear front mudguard cut out behind the factory mudguard. Install the E shape clip so that the clip slides over the inner sheet metal lip and is in line with the slot in the underside of Fender Flare. To secure the clip to Fender Flare apply inward tension on Fender Flare to the vehicle fender when installing the E clip, position the clip so that the barb in the clip locates in the slot of the Fender Flare.



STEP 8: Using #15 Torx head screwdriver re-install the upper screw from the rear factory mudguard through the slot in the Fender Flare.



STEP 9: Ensure all fixing points are tight and secure and that the rubber seal is flush neatly against the vehicle body.

For Technical Support/Warranty Information please call 800-757-7075

EGR Inc., 4000 East Greystone Drive, Ontario, CA 91761