

Installation Instructions

Front Bolt-On Look Fender Flares

TOYOTA TUNDRA (14-On)

FF842

Important: Please read instructions entirely before installing this product.

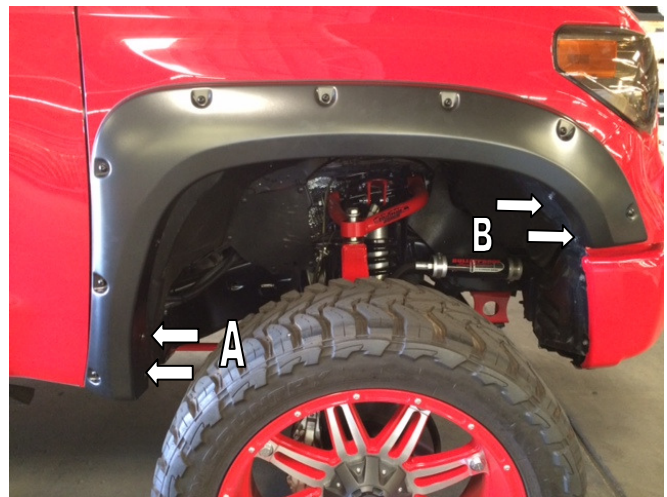
Hardware Included	QTY
Alcohol Wipe	4
Attachment Clip	6

Hardware Included	QTY
Short Screw	18
Long Screw	10
Short Spacer	4
Long Spacer	6

Bolt Kit Included	QTY

Ensure that both left and right hand Fender Flares suit the profile of the vehicle. Note the areas where the Fender Flares come in contact with the vehicle. NOTE: Before fitting Fender Flares remove any moldings, strips or existing flares from the wheel arch. If there is a body side molding, mark where the molding is to be cut, alternatively the Fender Flare can be cut to go around the molding. Be sure to allow enough room for the extrusion.

***For Rugged look flares begin installation at STEP 2.**



STEP 1: Clean the body areas where the Fender Flares will make contact. Ensure fenders are dry prior to install. Turn tires facing outward to provide additional room and ease hardware installation per side.

STEP 2: Place Fender Flare on the vehicle into the position of best fit. Note where the slots in Fender Flare at positions **A** and **B** align with the existing screws in the vehicle. Remove Fender Flare.

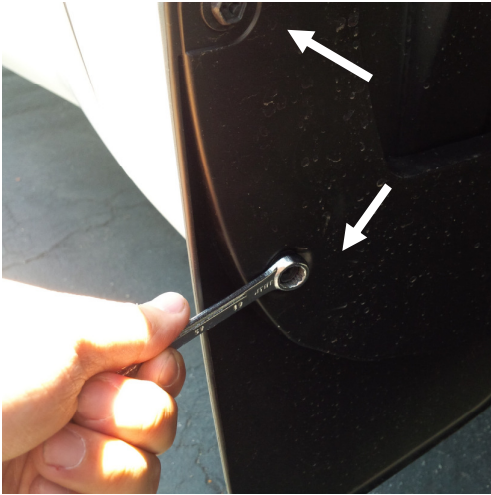
For Technical Support/Warranty Information please call 800-757-7075
EGR Inc., 4000 East Greystone Drive, Ontario, CA 91761

Installation Instructions

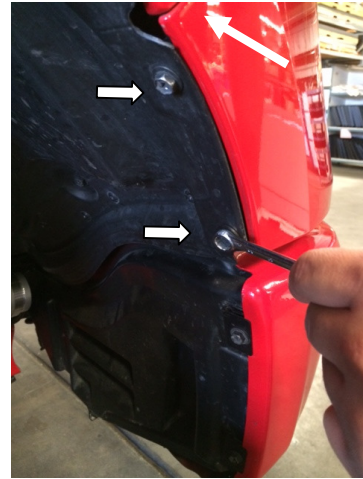
Front Bolt-On Look Fender Flares

TOYOTA TUNDRA (14-On)

FF842



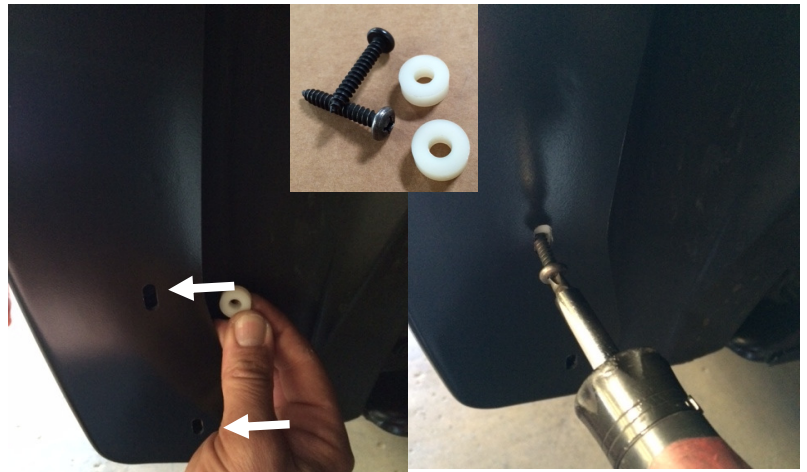
STEP 3: Using a 10mm socket / wrench remove the 2 screws from the factory mud flap and retain. These will not be reused in the Fender Flare Installation.



STEP 4: Using a 10mm socket / wrench remove the 2 front screws from the inner splash guard area, retain these for later re-install.



STEP 5: Place Fender Flare back on the vehicle into the position of best fit, so the slots in position **A** and **B** (Step: 5) are over the vacant holes in the splash guard areas. Firstly install provided short screw from hardware kit in the vacant slot directly above the slots from position **A** using Philips screwdriver. Re-install the previously removed factory screws in position **B** using a 10mm socket / wrench. Do not fully tighten screws at this stage.



STEP 6: Slide the supplied spacers in behind the Fender Flare to fill the gap between the flare and the splash guard/fender. Use a screwdriver or the provided long screws to locate the spacers in line with the factory attachment points. Do not fully tighten screws at this stage.

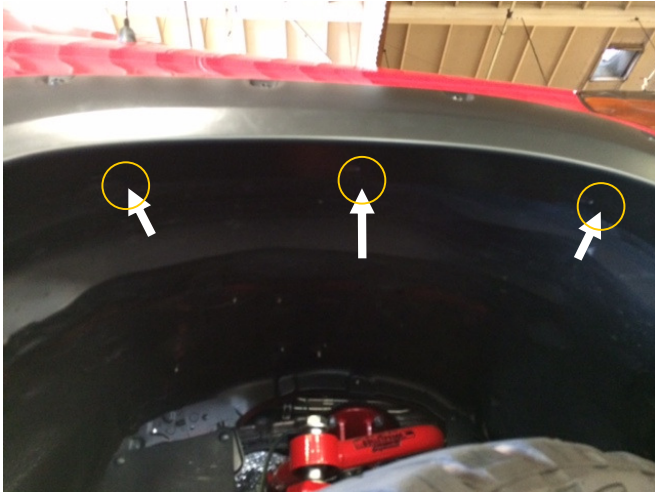
For Technical Support/Warranty Information please call 800-757-7075
EGR Inc., 4000 East Greystone Drive, Ontario, CA 91761

Installation Instructions

Front Bolt-On Look Fender Flares

TOYOTA TUNDRA (14-On)

FF842



STEP 7: Locate the clips in the slots on the Fender Flare as shown.



STEP 8: Secure attachment clips by sliding clip into Fender Flare slot and using the short screws supplied in the hardware kit to attach screw into existing holes in inner splash guard. Do not fully tighten screws at this stage.



STEP 9: If necessary, make minor adjustments to the flare's position to achieve the best fit for your vehicle. When satisfied fully tighten all screw locations, in the above order on which they were installed, to ensure rubber seal is flush neatly against the body.

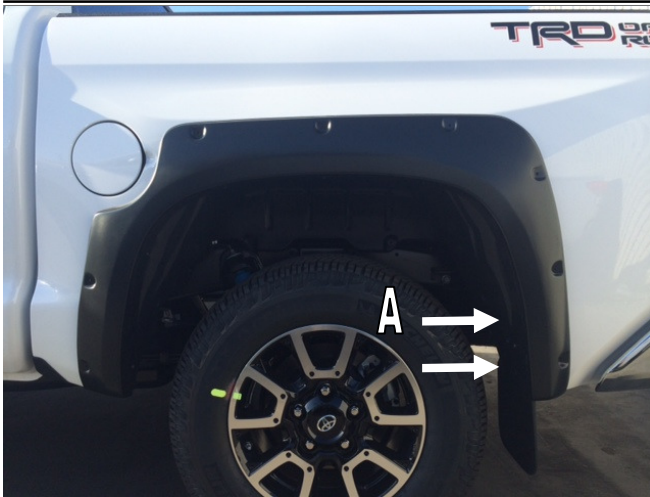


STEP 10: Clean the body area where the Fender Flares will make contact. Ensure fenders are dry prior to install.

For Technical Support/Warranty Information please call 800-757-7075
EGR Inc., 4000 East Greystone Drive, Ontario, CA 91761

Installation Instructions
Front Bolt-On Look Fender Flares
TOYOTA TUNDRA (14-On)

FF842



STEP 11: Hold Fender Flare onto the vehicle in the position of best fit. Note the slots in the Fender Flare at position **A** that align with the existing screws in the vehicle mud flap. Remove Fender Flare.



STEP 12: Using a 10mm socket / wrench remove the 2 screws from the factory mud flap and retain. These will not be reused in the Fender Flare Installation.



STEP 13: Place Fender Flare back on the vehicle into the position of best fit, then install a provided short screw into the top center hole to hold Fender Flare in place. Do not fully tighten screws at this stage.



STEP 14: Install remaining short screws at the 4 fixing points located on image above. Do not fully tighten screws at this stage.

For Technical Support/Warranty Information please call 800-757-7075
EGR Inc., 4000 East Greystone Drive, Ontario, CA 91761

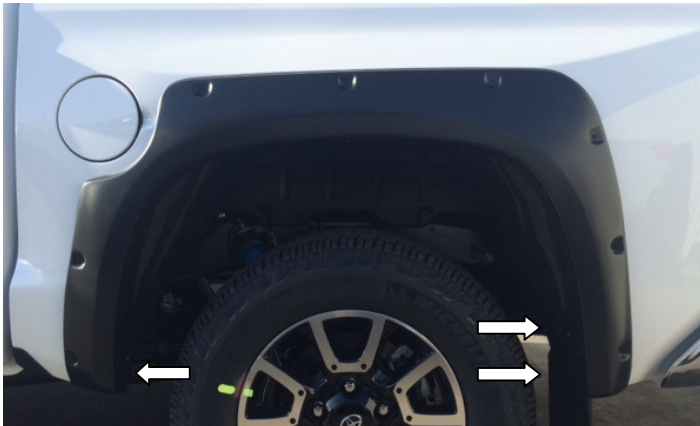
Installation Instructions
Front Bolt-On Look Fender Flares
TOYOTA TUNDRA (14-On)

FF842



STEP 15: At the remaining open 3 slot positions in the Fender Flare, slide the spacer in behind the Fender Flare to fill the gap between the flare and the mud flap / splash guard.

STEP 16: Use a screwdriver or the provided long screws to locate the spacers in line with the factory attachment points. Do not fully tighten screws at this stage.



STEP 17: Note installation locations of spacers and long screws.



STEP 18: If necessary, make minor adjustments to the flare's position to achieve the best fit for your vehicle. When satisfied fully tighten all screw locations, in the above order on which they were installed, to ensure rubber seal is flush neatly against the body.

For Technical Support/Warranty Information please call 800-757-7075
EGR Inc., 4000 East Greystone Drive, Ontario, CA 91761