



## Installation Instructions

Bolt-On Fender Flares  
Nissan Titan (16-On)

FF801

**Important: Please read instructions entirely before installing this product.**

Hardware Included	QTY
Extrusion	30.5ft
U CLIP .6mm	6
Alcohol Towelette	4

Hardware Included	QTY

Bolt Kit Included (Bolt-On look flare only)	QTY
Nuts	42
Allen Key Bolts	42

Ensure that both left and right hand front Fender Flares suit the profile of the vehicle. Note the areas where the Fender Flares come in contact with the vehicle. NOTE: Before fitting Fender Flares remove any moldings, strips or existing flares from the wheel arch. If there is a body side molding, mark where the molding is to be cut, alternatively the Fender Flare can be cut to go around the molding. Be sure to allow enough room for the extrusion. **No drilling of vehicle is required for Bolt-On Look Fender Flares. This is a non-drill product.**

**\*PRIOR TO ANY PAINTING & INSTALLATION, PRODUCT SHOULD BE THOROUGHLY INSPECTED FOR ALL COMPONENTS LISTED ABOVE. PRODUCT SHOULD ALSO BE TEST FITTED PRIOR TO ANY PAINTING & INSTALLATION. PLEASE CONTACT EGR Inc. FOR ANY FITMENT QUESTIONS AND OR MISSING COMPONENTS.**

PAINTING INSTRUCTIONS – If Fender Flares are being painted; do not install edge extrusion until painting is complete. Prior to painting, clean all surfaces to be painted using clean water and a mild detergent, do not use lacquer thinner or any solvent based products. Wipe completely dry. Best results will be achieved by wiping the areas to be painted with a tack rag just prior to painting. Most automotive paints can be applied directly to the Fender Flares, however some may require a primer (check paint manufacturer specifications). Good adhesion will be achieved without sanding. Select a paint (and primer if necessary) that is suitable for rigid plastics PMMA (Acrylic). If using a paint system that requires baking, do not expose the product to temperatures above 70°C (158°F). Do not fit the extrusion or any of the hardware to the Fender Flares until the paint is completely dry.



**STEP 1:** Attach the bolts and nuts to each Fender Flare using a 3/16" Allen key and a 10mm wrench/socket (wrench /socket and Allen key not supplied). Ensure inside of Fender Flares where the rubber seal is attached is clean, using the alcohol wipes provided. Wipe away any residue with a dry clean cloth.



**STEP 2:** Attach the included rubber seal to the Fender Flares. Peel back 2" of the adhesive backing and position on the Fender Flare. Attach the seal to the Fender Flare, peeling back a few inches at a time. Ensure pressure is used to secure rubber seal to Fender Flare edge. Attach rubber seal along all areas the Fender Flare will make contact with the vehicle body.

**For Technical Support/Warranty Information please call 800-757-7075  
EGR Inc., 4000 East Greystone Drive, Ontario, CA 91761**



## Installation Instructions

Bolt-On Fender Flares  
Nissan Titan (16-On)

FF801



**STEP 3:** Trim any excess rubber seal and discard.



**STEP 4:** Clean the body areas where the Fender Flares will make contact. Ensure fenders are dry prior to install. Turning tires outward during install of each Fender Flare will ensure ease of install at bottom fixing points. For models equipped with factory fender flares, removal of factory flares is required, please consult the vehicle service manual for factory fender flare removal.



**STEP 5:** Place Fender Flare on the vehicle into the position of best fit. Note where (4) slots in Fender Flare correspond with (4) existing screws in the vehicle wheel arch molding. Remove Fender Flare. Remove the existing vehicle screws in locations as shown with #2 Phillips head screwdriver. Maintain screws for re-install.



**STEP 6:** Place Fender Flare on vehicle, ensure the slots in the Fender Flare align with the holes in the wheel arch from the previously removed factory screws. Using #2 Phillips head screwdriver, re-install the previously removed (4) screws through slots in Fender Flare. Once positioned correctly ensure all fixing points are tight and secure.

For Technical Support/Warranty Information please call 800-757-7075  
EGR Inc., 4000 East Greystone Drive, Ontario, CA 91761



## ***Installation Instructions***

**Bolt-On Fender Flares  
Nissan Titan (16-On)**

**FF801**



**STEP 7:** Install the provided U shape metal clip at the (1) remaining slot location in the Fender Flare. Ensure that positive pressure is applied on the Fender Flare to the vehicle fender when installing clips. Slide the clip over the Fender Flare and the inner lip of the front bumper fascia ensuring that the barb in the clip locates in the slot of the Fender Flare. Ensure that the rubber seal is flush neatly against the vehicle body.

**For Technical Support/Warranty Information please call 800-757-7075  
EGR Inc., 4000 East Greystone Drive, Ontario, CA 91761**



## Installation Instructions

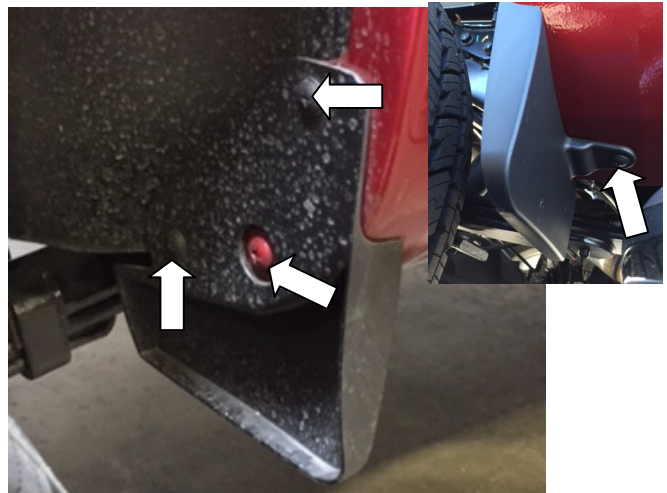
Bolt-On Fender Flares  
Nissan Titan (16-On)

FF801

### Rear Installation



**STEP 8:** Clean the body area where the Fender Flares will make contact. Ensure fenders are dry prior to install. For models equipped with factory fender flares, removal of factory flares is required, please consult the vehicle service manual for factory fender flare removal.



**STEP 9:** Using #2 Phillips head screwdriver, remove (4) screws from the forward factory splash guard deflector, (3) from inside wheel arch and (1) from the underside. Rear deflector will not work with Fender Flare installation. Retain screws for fender flare install and store factory splash guard/deflector.



**STEP 10:** Place Fender Flare on the vehicle into the position of best fit. Note where (4) slots in Fender Flare correspond with (4) existing screws in the vehicle wheel arch. Remove Fender Flare. Remove only the existing vehicle screws in location as shown with a #2 Phillips head screwdriver. Maintain screws for re-install.



**STEP 11:** Place Fender Flare on vehicle, ensure the slots in the Fender Flare align with the holes in the wheel arch from the previously removed factory screws. Using #2 Phillips head screwdriver re-install the previously removed (4) screws through slots in Fender Flare. Once positioned correctly, ensure all fixing points are tight and secure.

For Technical Support/Warranty Information please call 800-757-7075  
EGR Inc., 4000 East Greystone Drive, Ontario, CA 91761



## ***Installation Instructions***

**Bolt-On Fender Flares  
Nissan Titan (16-On)**

**FF801**



**STEP 12:** Install the provided U shape metal clips in the (2) remaining slot locations in the Fender Flare. Ensure that positive pressure is applied on the Fender Flare to the vehicle fender when installing clips. Slide the clip over the Fender Flare and the inner lip of the wheel arch ensuring that the barb in the clip locates in the slot of the Fender Flare. Ensure all fixing points are tight and secure and that the rubber seal is flush neatly against the vehicle body.

**For Technical Support/Warranty Information please call 800-757-7075  
EGR Inc., 4000 East Greystone Drive, Ontario, CA 91761**