

*REAR FRAME MOUNT BRACE
1415
67-69 GM CAMARO/FIREBIRD*

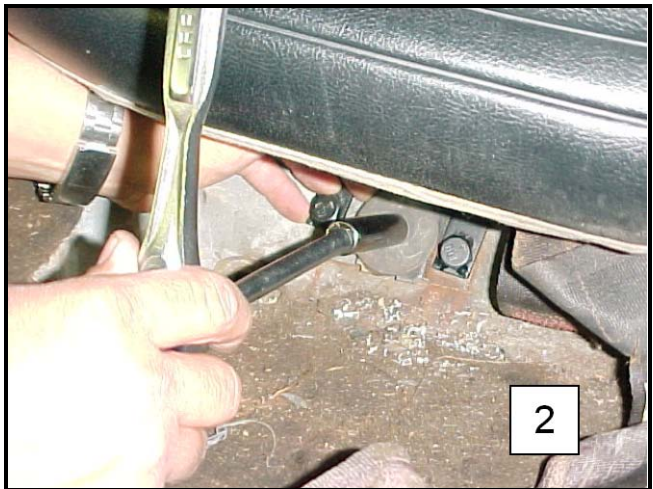


Thank you for your purchase of this Hotchkis Performance product.

Note: Please read the entire installation instructions before starting. Having the right tools will ensure a smooth install process. This part is intended to be installed with the Hotchkis Rear Sway bar kit 2207/R. However, you may install this part with or without the sway bar kit. This instruction manual shows the installation of both the REAR FRAME MOUNT BRACE and the HOTCHKIS 2207 SWAY BAR KIT together.

Installation of Hotchkis Rear Sway Bar

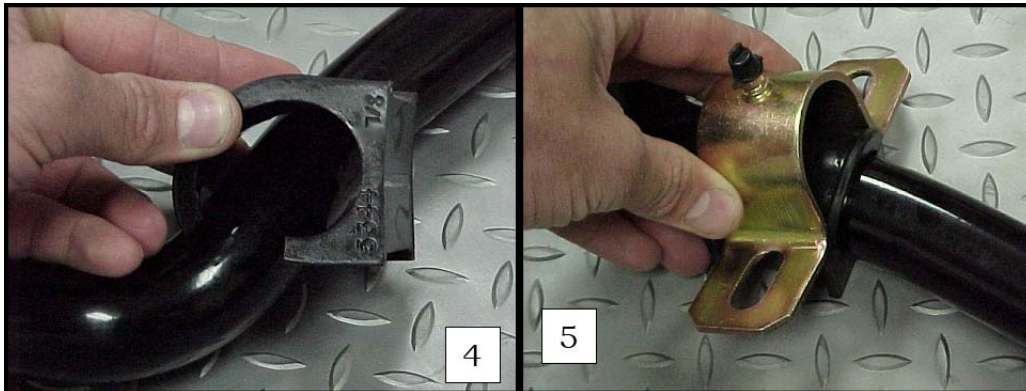
- 1R. Remove the lower rear seat cushion. If the cushion won't pull up easily, use a long screwdriver to push and release the small bar that is clipped in the bracket. Remove the two bolts that hold the back part of the seat to the body and lift the upper cushion to remove it from the vehicle. This will allow you to access the floor pans.



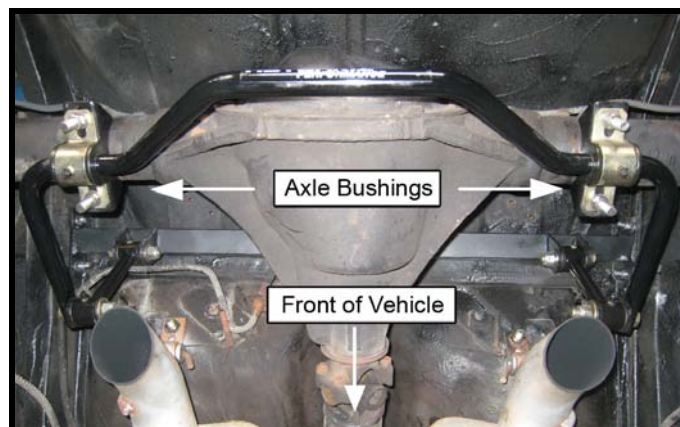
- 2R. Jack up the vehicle and properly support with jack stands or lift jacks. Make sure the rear end is supported with the vehicle's load on the leaf springs. This is to ensure you install the rear bar in the proper position.
- 3R. Take the 7/8" bushings and grease the inner surface with the included white silicon grease.



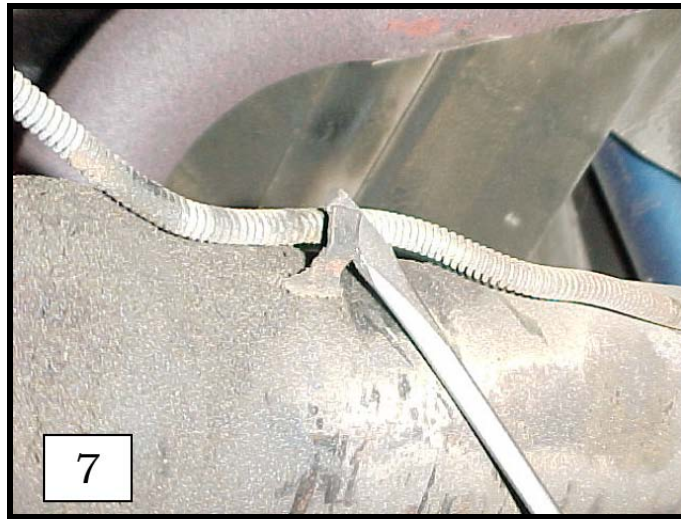
- 4R. Install the bushings on the bar. (4) Place the bracket over top of the bushing. (5)



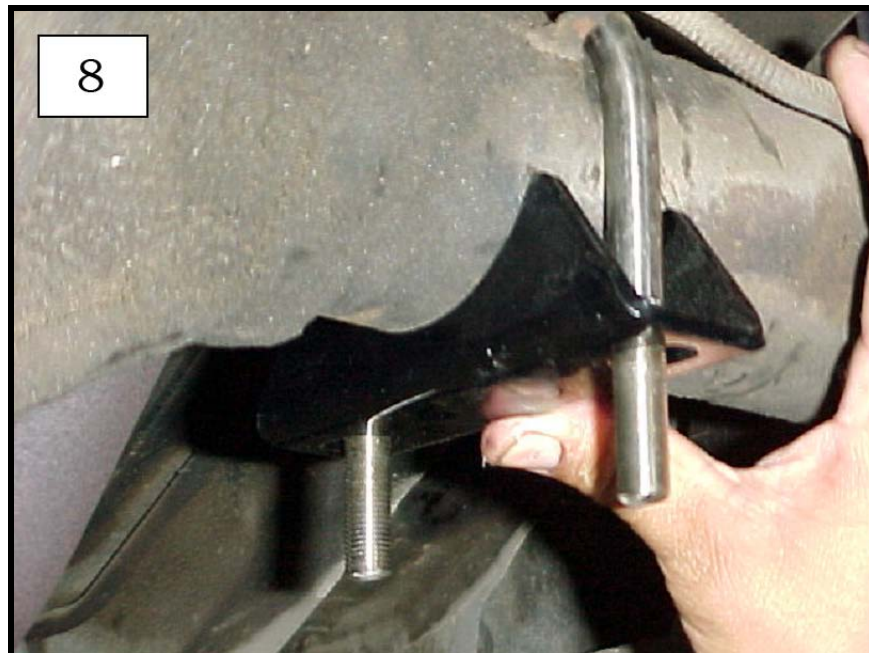
- 5R. After you determine there's enough clearance for the bar, note the approximate location of the sway bar axle bushings.



- 6R. Take a screwdriver and carefully pry up the brake line to allow the U-Bolt to drop down over the axle. (7)

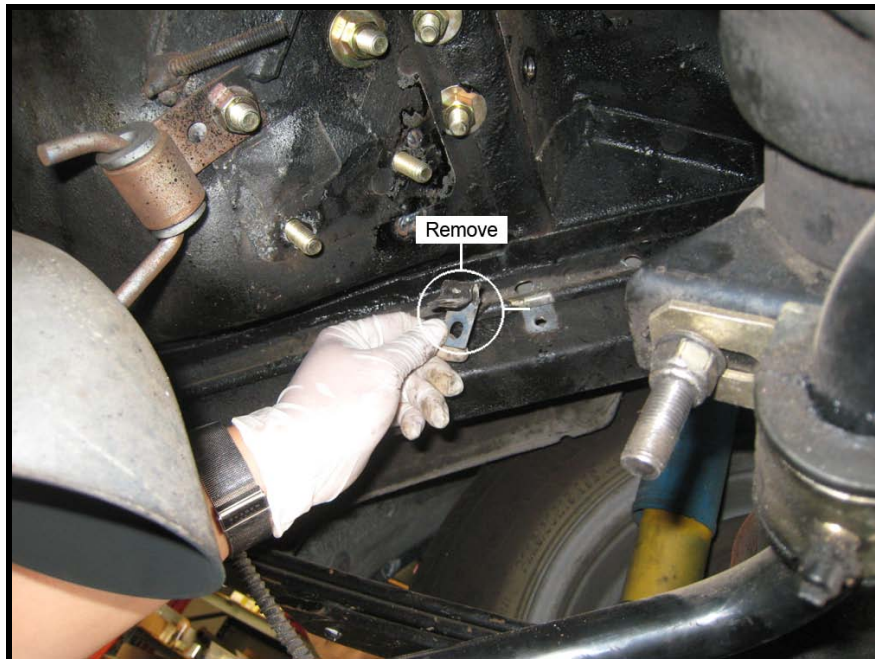


- 7R. Install the U-Bolts on the axle and slip the axle bracket over the U-Bolt on the bottom side of the axle. Use masking or duct tape to secure them. Place the sway bar assembly under the axle and slip the U-bolt legs through the sway bar brackets. Place washers and nylock nuts on the U-Bolt. Snugly fasten the nylock nuts a bit, but do not fully tighten at this time.

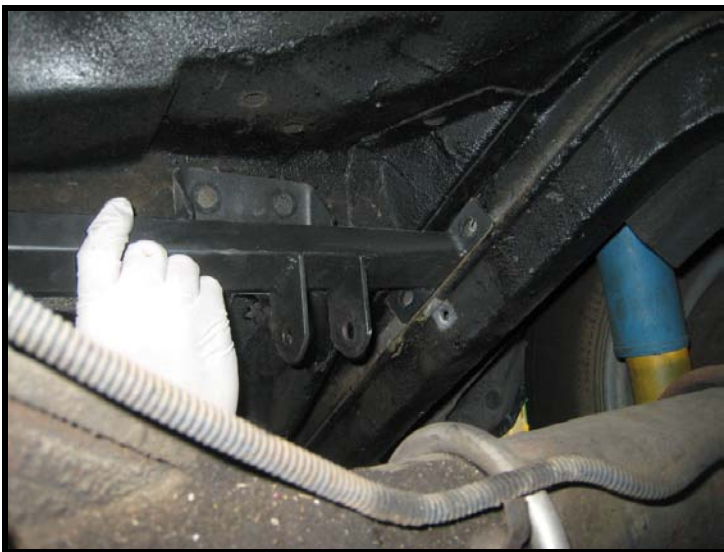




- 8R. Remove the screw and clip that holds the fuel line located on the frame rail of the passenger side to allow for the chassis brace to slide into place. '68 cars may need to drill out rivet style line tabs.



- 9R. Lift chassis brace up and over the back side of the rear axle and position it up against the body pan and chassis as shown below.



NOTE:

We have noticed on rare occasions that the brace is too narrow on some chassis'. If there is more than an 1/8" of gap between the brace and the frame rails, then please use the special spacer shims (part # 23490019) included in your kit to rectify the tolerance issue.

10R. Once you have the chassis brace in place, mark the spots where you will drill the holes to secure the brace. Do this on both sides.



11R. Remove the chassis brace and using a 7/16" drill bit, drill the 4 holes that you just marked.



12R. Place chassis brace back into place and mark the remaining 4 holes for drilling as shown below. After marking the holes, remove brace and using a 7/16" drill bit, drill the holes.



13R. Using the 1718 Hardware kit, pull out the U-Bolts and coat the threading with the Anti-Seize Lubricant.



Feed one end of the U-Bolt through one of the holes on either end of the chassis brace and maneuver it into the backside of the other hole as shown below.



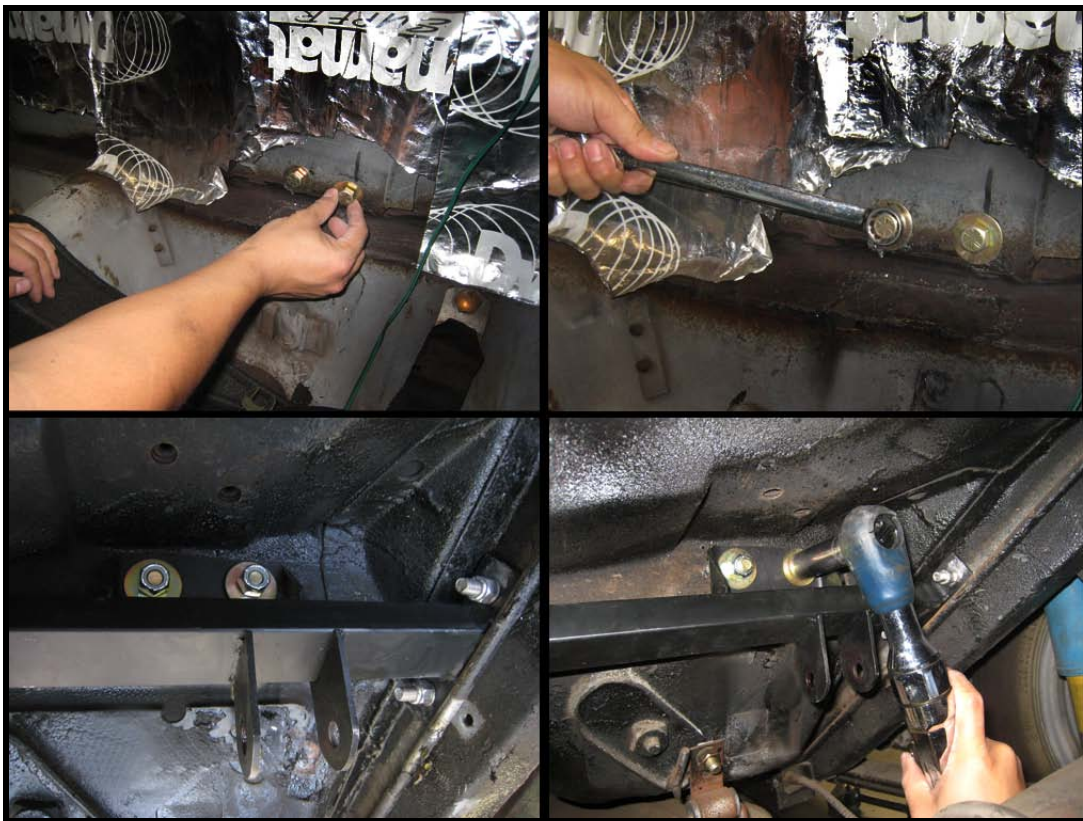
Place washers and nylock nuts on the U-Bolt. Tighten one side of the U-Bolt partially, and then tighten the other side of the U-Bolt partially alternating back and forth until fully tightened to guarantee the bolt is tightened properly.



Special Note:

You may reuse the fuel line tab by rotating it 180° and use the same bolt hole that mounted it. '68 cars may need to purchase Adel Clamps from your local auto parts store and use one of the u-bolt studs as a mounting fastener. Sandwich the Adel Clamp between Hotchkis brace tab and the nylock nut/washer. Make sure the Adel clamp is the correct size for you fuel tube and can be mounted with a 3/8" hardware.

- 14R. From inside the car, insert the supplied 7/16" bolts into the 4 holes drilled in step 12R. You will need one person inside the car to hold the bolts with a wrench while you tighten up the nuts from the bottom.



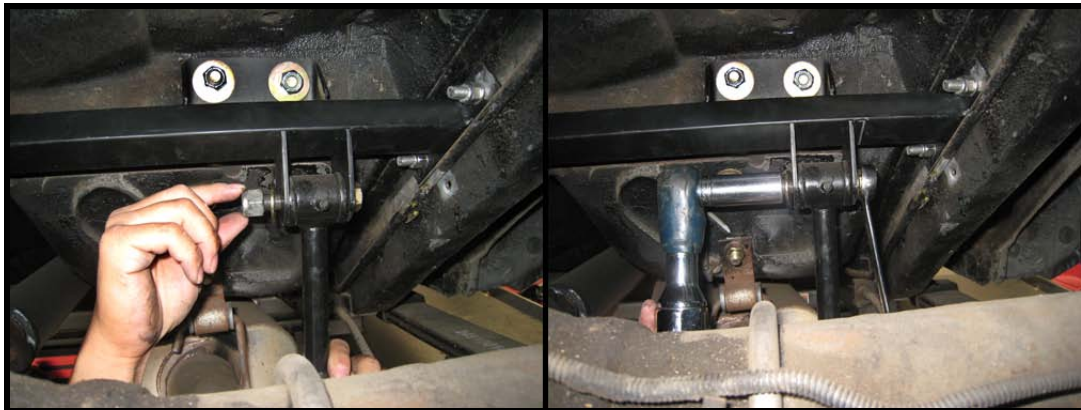
- 15R. Grease the sides of both dog bone style end links.



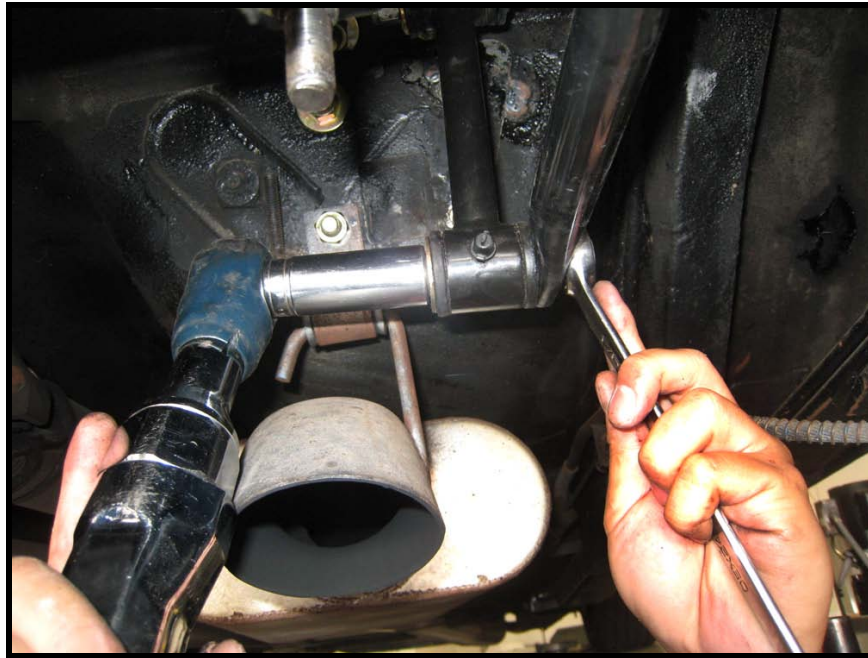
- 16R. Using the T1712 Hardware kit, take the longer (3") bolts and attach the dog bone end link to the bar on the INSIDE of the bar. There are two different washer types included in the bolt kit, use the large diameter washer up against the dog bone, and the small one against the sway bar. Tighten the bolt to the point where you can just rotate the end link on the bolt.



- 17R. Slide the other end of the dog bone style end link up in between the brackets on the chassis brace. Check for exhaust clearance in this area. If necessary, you may have to have the exhaust pipes re-bent to provide clearance for the new sway bar assembly. Any competent exhaust shop can handle this modification easily. If clear, use the shorter (2.75") bolt with a small washer on each side of the bracket to complete the assembly and fully tighten.



- 18R. Fully tighten the other end of the dog bone style end links which were left loose in step 16R.



- 19R. *Double Check all Hardware*

Double check and make sure all hardware is full tightened before driving the vehicle. You are finished with the rear sway bar kit.



Hotchkis Performance LLC

Return Policy & Limited Warranty

Effective December 1, 2010 all Hotchkis products must be registered to qualify for warranty at www.hotchkis.net or via the mail-in warranty card, included with the product, within 30 days of the original purchase date.

IMPORTANT: This warranty supersedes all other warranties included with this product.

Return Policy

We want you to be completely satisfied with your Hotchkis Performance product. For products, presenting signs of shipping damage please contact the freight carrier immediately. All our products are guaranteed to be free from manufacturer's defects. If your order arrives with a manufacture defect, please contact our Customer Service Department at (562) 907-7757. You will be assigned a Returned Goods Authorization Number (RGA). The package you return must show the RGA on the outside of the package, include the original invoice and be shipped prepaid to our facility. The product has to be unused and in its original packaging materials. Exchanges or refunds made after 30 days will be subject to a 20% restocking charge. **If you purchased your Hotchkis Performance product from an authorized dealer, you are still covered by this return policy. All returns however, should be made to your dealer, not to Hotchkis Performance directly.**

Limited Warranty

Hotchkis Performance offers a Limited Warranty against defects in materials and workmanship for the term of 36 months (3 years) from the date of purchase of this product. This Warranty only applies to the original retail purchaser who retains ownership of the vehicle on which the product was originally installed. If the product is determined to be defective, Hotchkis Performance will repair, replace or refund the purchase price of the defective product at Hotchkis Performance's sole discretion, which shall fully satisfy and discharge any and all warranty claims. Any repaired or replaced product will be returned to the sender excluding the cost of freight. **Products must be registered to qualify for warranty at www.hotchkis.net or via the mail-in warranty card, included with the product, within 30 days of the original purchase date.**

Exclusions from Warranty

Items offered but not manufactured by Hotchkis Performance are warranted according to the manufacturer's terms and are not covered by this limited warranty. Hotchkis Performance shall not be responsible for any labor, removal, installation, re-installation or maintenance costs. This warranty does not cover the cosmetic finish or plating of any product or any normal wear and tear to any product including, but not limited to bushings, brackets, end-links, hardware, steering components, shocks or springs. In addition, this warranty does not apply to any products that have been:

- **Improperly installed or installed by someone other than a qualified, licensed auto mechanic experienced in the installation and removal of suspension products;**
- **Improperly serviced, misused, or modified, altered or subjected to abuse, negligence, accident or collision;**
- **Installed in any vehicle that has been modified;**
- **Installed on any vehicle that has carried loads in excess of automobile manufacturer suggested weight limits; or**
- **Installed on any vehicle that has been subject to abnormal or excessive use, including rallying, racing, or racing-type activities or off-road use.**

Limitation of Warranty

This limited warranty is the entire and only warranty for the products and may not be modified or supplemented by any other person or company in any form. Any description of the products, by anyone, is for the sole purpose of identifying them and is not part of the basis of the bargain, and does not constitute a warranty that the products will conform to that description. The statements of any salesperson do not constitute part of this limited warranty and cannot be relied upon as a warranty.

THERE ARE NO WARRANTIES, EXPRESSED OR IMPLIED, INCLUDING ANY IMPLIED WARRANTIES OF MERCHANTABILITY OR FITNESS FOR A PARTICULAR PURPOSE, WHICH EXTEND BEYOND THE DESCRIPTION ON THE FACE HEREOF. ANY IMPLIED WARRANTIES ARE DISCLAIMED TO THE FULLEST EXTENT PERMITTED BY LAW. THIS WARRANTY DOES NOT COVER CONSEQUENTIAL DAMAGES, LOSS OF TIME OR REVENUES, INCONVENIENCE, LOSS OF USE OF THE VEHICLE, DAMAGE TO THE VEHICLE OR COMPONENTS OF THE VEHICLE, ANY OTHER TYPE OF CONSEQUENTIAL DAMAGES, OR OTHER INCIDENTAL OR INDIRECT DAMAGES. HOTCHKIS' MAXIMUM LIABILITY UNDER THIS WARRANTY SHALL IN NO EVENT EXCEED THE PURCHASE PRICE OF THE PRODUCT. Some states do not allow limitations on how long an implied warranty lasts or the exclusion or limitation of incidental or consequential damages and in such states the above limitations or exclusions may not apply. This limited warranty gives the purchaser specific legal rights and the purchaser may have other rights that may vary from state to state.

Technical Information

Hotchkis Performance makes every effort to ensure that you are provided with the most accurate and up-to-date technical information. However, all technical information is approximate and may vary upon application. Additional suspension components may be needed in some applications, depending upon the make, model, engine and chassis of the vehicle. Hotchkis Performance is not responsible for any consequences resulting from manufacturer's technical mid-year changes. Hotchkis Performance products should only be installed by a qualified, licensed auto mechanic experienced in the installation of such products.

Warranty Claim Procedure:

The answer to ALL the following questions should be YES before making a warranty claim:

- **Did you register the product at www.hotchkis.net or via the mail-in warranty card within 30 days of purchase?**
- **Is the product appropriate to your application?**
- **Did you carefully and thoroughly read the instructions provided along with the product?**
- **Do you have the original invoice or sales receipt?**
- **Is the return date within 36 months from the purchase date?**
- **Are you the original purchaser?**
- **Was the product properly installed by a qualified, licensed auto mechanic?**
- **Has the product been installed on the original vehicle on which it was installed at all times?**
- **Is the product unmodified and clean?**
- **Is the reason for return a legitimate product defect?**

If the answer to all these questions is YES, please contact our Customer Service Department at (562) 907-7757. You will be given a Returned Goods Authorization Number (RGA) valid for 60 days. You will also be asked to ship the product prepaid to our facility. All shipments MUST be (i) prepaid, (ii) include the original invoice or sales receipt, (iii) show the RGA on the outside of the package and (iv) include your name, address, make and model of the vehicle, and a brief description of the claimed defect, including the circumstances under which the defect occurred. If the warranty claim is deemed valid then Hotchkis will estimate shipping costs to return the repaired or replacement part and contact you for payment. Hotchkis's Limited warranty requires that any repaired or replaced product will be returned to the sender excluding the cost of freight. Warranty related inquires should be sent to the following address:

**HOTCHKIS PERFORMANCE, LLC
C/O CUSTOMER SERVICE
8633 Sorensen Avenue
SANTA FE SPRINGS, CA 90670**

Hotchkis Performance will not accept product returns without the RGA number, receipt and the information described above. C.O.D. or collect shipments will be refused. Once the returns are received at Hotchkis Performance, we will evaluate the products, verify the sales receipt, and investigate the warranty claim. Any repaired or replaced product will be returned to the sender.

Effective December 1, 2010. This return policy and limited warranty supersedes all previous policy and warranty statements. Policies and warranties are subject to change without notice. Hotchkis Performance is not responsible for printing errors.