



TYPHOON INTAKE SYSTEMS

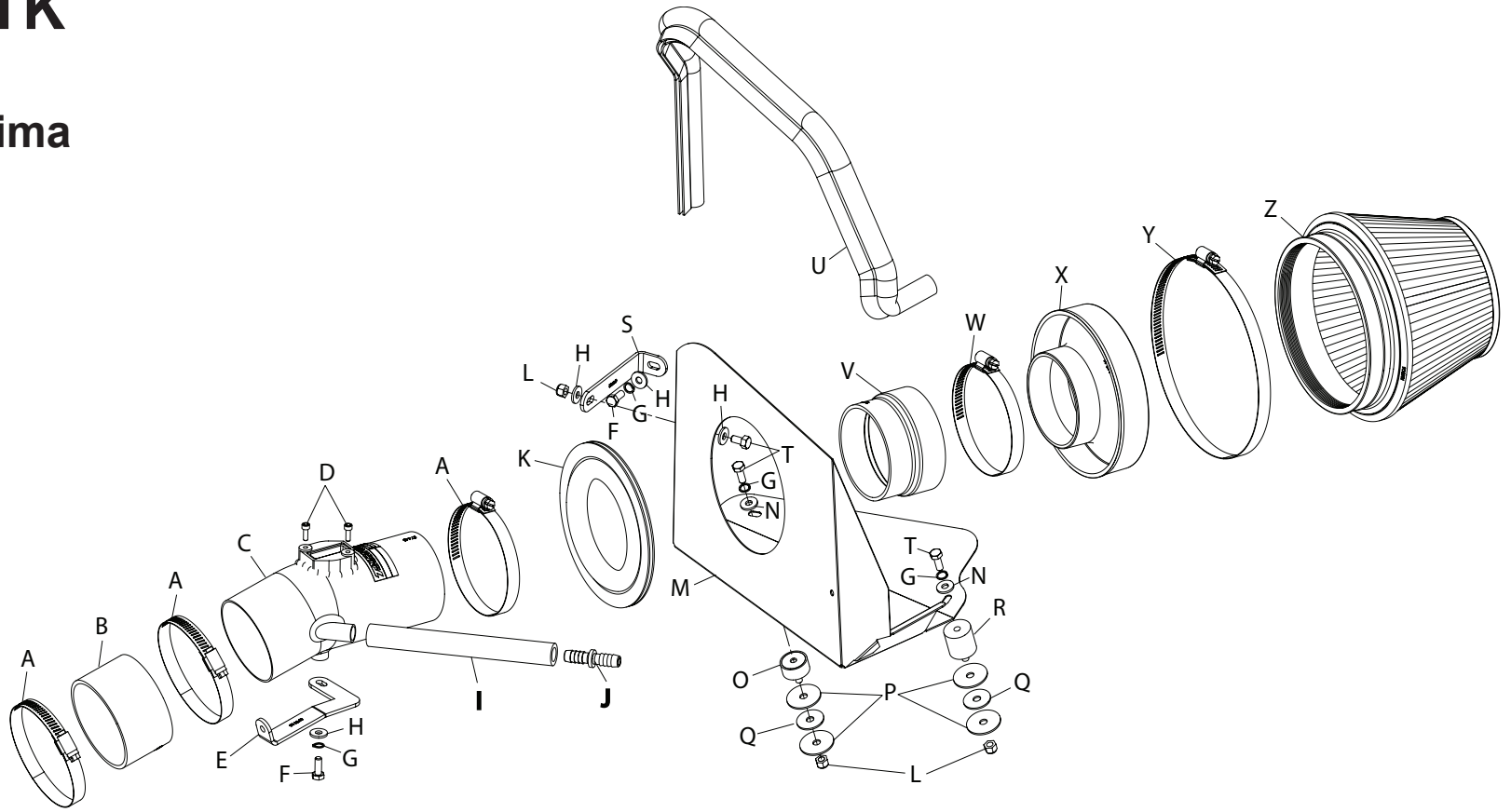
INTAKE SYSTEMS FOR VEHICLES LISTED ARE 50 STATE LEGAL. SEE KNFILTERS.COM FOR CARB STATUS ON EACH PART FOR A SPECIFIC VEHICLE.

INSTALLATION INSTRUCTIONS

69-7002TTK NISSAN 2009-14 Maxima V6-3.5L

TOOLS NEEDED:

- Flatblade Screwdriver
- Ratchet
- Extension
- 10mm Socket
- 8mm Socket
- 7mm Socket
- Pliers
- 10mm Wrench
- 5mm Allen Wrench
- 3mm Allen Wrench



PARTS LIST:

Description	Qty.	Part #	Description	Qty.	Part #	Description	Qty.	Part #
A Hose Clamp #52	3	08610	J Hose Mender; 1/2" TO 5/8", Barbed	1	08726	S Bracket; 57-3025, L-Bend	1	070952
B Hose; 3-1/4" ID X 2" L Reinforced	1	08690	K Edge Trim (20")	1	102494	T Bolt; 6MM-1.00 X 16MM, SS	3	07812
C Intake Tube	1	27443	L Nut; 6MM Nylock, Hexhead, SS	3	07512	U Edge Trim (35")	1	102471
D Bolt; M4-0.07 8MM, A/H Cap, SS	2	07733	M Heat Shield	1	073114	V 3.25" id to 3.50" id X 2.25" L, tprd	1	084091
E Bracket; "L", STL, TK/PC	1	070113	N Washer; 6MM Flat, SS	2	08269	W Hose Clamp #56	1	08620
F Bolt; M6X1.00X12MM, Hex, SS	2	07727	O Stud; M/F, 1/2" L X 1" W, M6 X 1.00	1	070228	X Adaptor; 57-1530 #380	1	21512-1
G Washer; 1/4" LOCK, ZN	4	08198	P Washer; 1.25D X .28 HOL	4	08151	Y Hose Clamp #104	1	08697
H Washer; 1/4" ID X 5/8" OD - SAE	4	08275	Q Washer; 1" X .300 X .100 Rubber	2	21685	Z Air Filter	1	RC-2960
I Hose; 1/2" ID X 7" L	1	08159	R Stud; M6 X 1, 1" T, M/F	1	02033			

NOTE: FAILURE TO FOLLOW INSTALLATION INSTRUCTIONS AND NOT USING THE PROVIDED HARDWARE MAY DAMAGE THE INTAKE TUBE, THROTTLE BODY AND ENGINE.

TO START:

1. Turn off the ignition and disconnect the negative battery cable.

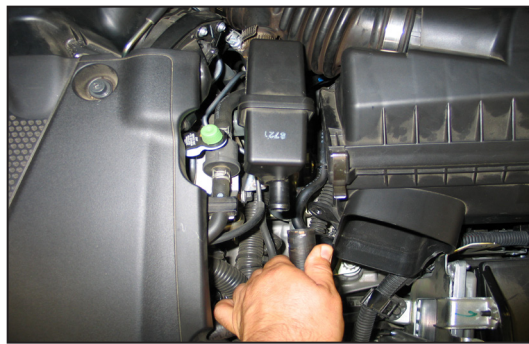
NOTE: Disconnecting the negative battery cable erases pre-programmed electronic memories. Write down all memory settings before disconnecting the negative battery cable. Some radios will require an anti-theft coded to be entered after the battery is reconnected. The anti-theft code is typically supplied with your owner's manual. In the event your vehicles' anti-theft code cannot be recovered, contact an authorized dealership to obtain your vehicles anti-theft code.



2. Remove the three bolts that secure the fresh air intake duct shown. These bolts will be re-used in a later step.



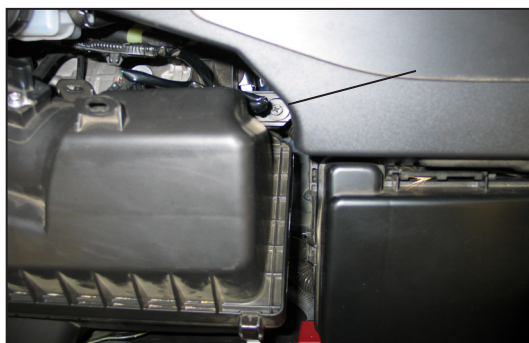
3. Remove the fresh air intake duct from the vehicle as shown.



4. Release the crank case vent hose spring clamp and then disconnect the crank case vent hose from the intake tube resonator chamber.



5. Disconnect the mass air sensor electrical connection.

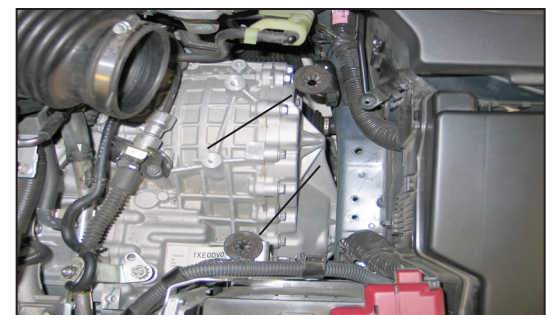


6. Remove the air box retaining bolt shown. **Note: This bolt is located at the rear of the air box near the strut tower.**



7. Loosen the hose clamp that secures the intake tube to the air box. Remove the stock air box from the vehicle.

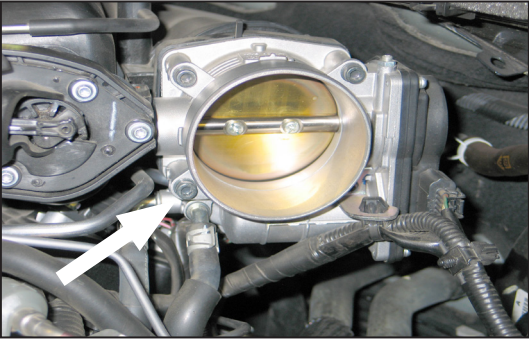
Note: K&N Engineering Inc. recommends that customers do not discard the factory air intake.



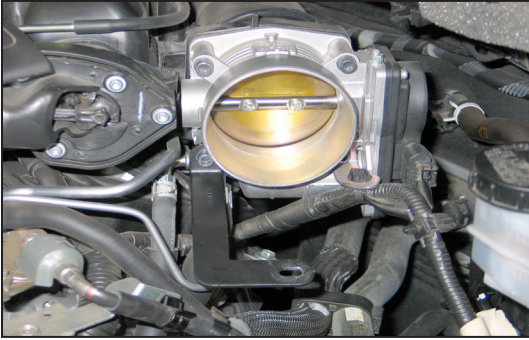
8. Remove the two air filter housing mounting grommets shown.



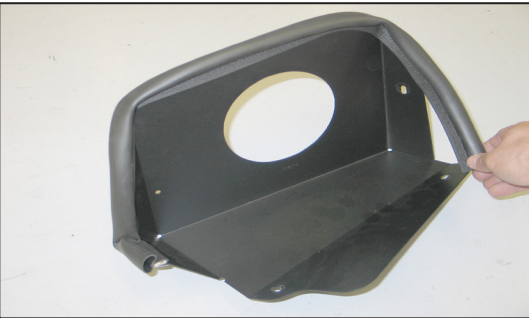
9. Remove the Stock Intake tube and intake tube resonator chambers as shown. **Note: Pull the lower intake tube resonator chamber firmly to release it from the mounting grommet.**



10. Remove the lower front throttle body mounting bolt shown. This bolt will be re-used in the next step.



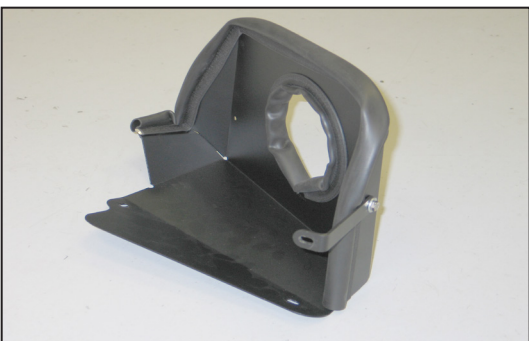
11. Using the bolt removed from the previous step, install the provided tube mounting bracket (070113) onto the throttle body as shown.



12. Install the provided edge trim onto the heat shield as shown.
Note: Some trimming of the edge trim will be necessary.



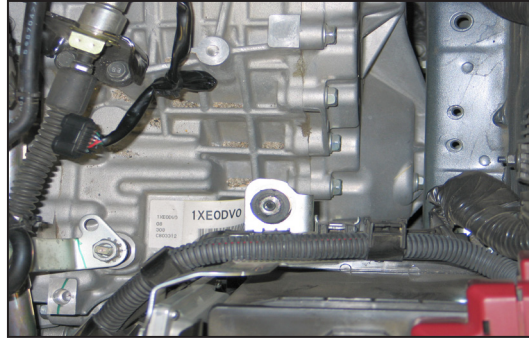
13. Install the provided edge trim into the hole of the heat shield as shown.
Note: Some trimming of the edge trim will be necessary.



14. Install heat shield mounting bracket (070952) onto the heat shield as shown.

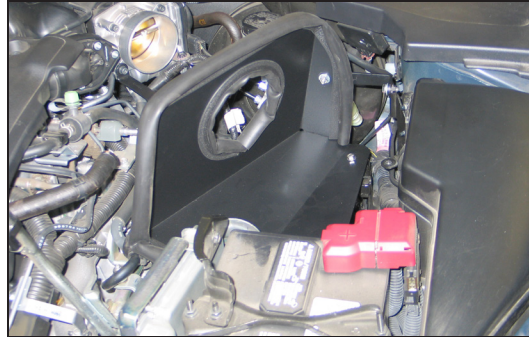


15. Install the shorter rubber mounted stud onto the rear air box mounting bracket as shown.
Note: Be sure to place a large fender washer on each side of the mounting bracket.



16. Install the longer rubber mounted stud onto the front air box mounting bracket as shown.

Note: Be sure to place a large fender washer on each side of the mounting bracket.



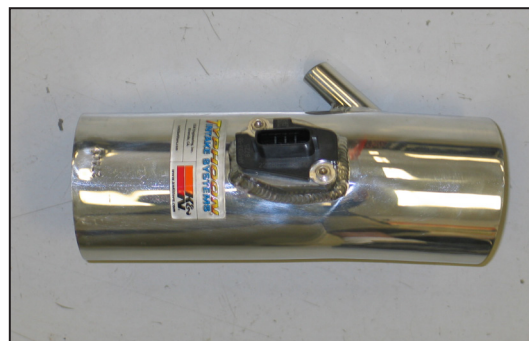
17. Install the heat shield assembly onto the rubber mounted studs installed in the previous steps and secure with the provided hardware. Secure the heat shield mounting bracket to the air box mounting bracket on the strut tower using the provided hardware.



18. Re-install the fresh air intake duct onto the core support and into the heat shield and secure with the factory bolts.



19. Remove the two screws securing the mass air sensor, and then remove the mass air sensor from the stock air box as shown.



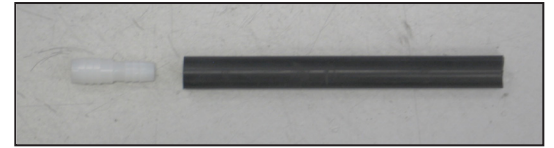
20. Install the mass air sensor into the K&N® intake tube and secure with the provided hardware.



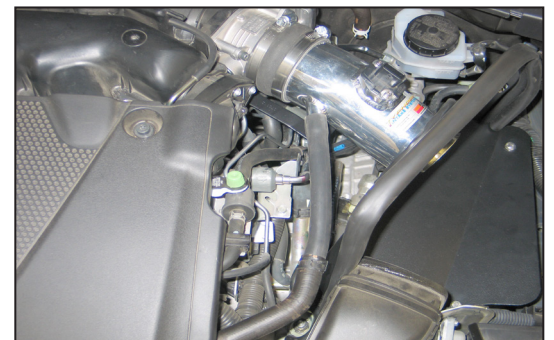
21. Install the silicone hose (08690) onto the throttle body and secure with the provided hose clamp.



22. Install the K&N® intake tube into the silicone hose installed onto the throttle body and align it with the tube mounting bracket. Secure the intake tube with the hardware and hose clamp provided.



23. Install the hose mender into the crank case vent hose provided.



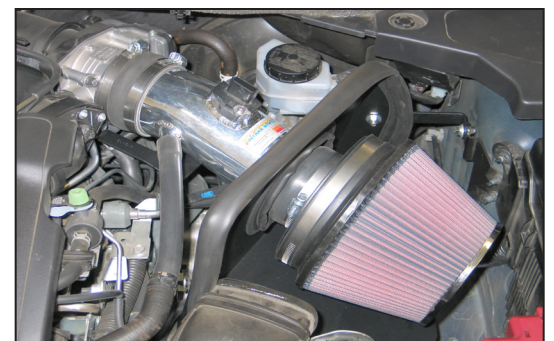
24. Install the crank case vent hose into the factory crank case vent hose and then connect the open end onto the K&N® intake tube as shown.



25. Install the silicone hose (084091) onto the air filter adapter and secure with the provided hose clamp as shown.



26. Install the K&N® air filter onto the air filter adapter assembly as shown.



27. Install the K&N® air filter assembly onto the intake tube and secure with the provided hose clamp.



28. Re-connect the mass air sensor electrical connection.



29. Reconnect the vehicle's negative battery cable. Double check to make sure everything is tight and properly positioned before starting the vehicle.

30. The C.A.R.B. exemption sticker, (attached), must be visible under the hood so that an emissions inspector can see it when the vehicle is required to be tested for emissions. California requires testing every two years, other states may vary.

31. It will be necessary for all K&N® high flow intake systems to be checked periodically for realignment, clearance and tightening of all connections. Failure to follow the above instructions or proper maintenance may void warranty.

ROAD TESTING:

1. Start the engine with the transmission in neutral or park, and the parking brake engaged. Listen for air leaks or odd noises. For air leaks secure hoses and connections. For odd noises, find cause and repair before proceeding. This kit will function identically to the factory system except for being louder and much more responsive.

2. Test drive the vehicle. Listen for odd noises or rattles and fix as necessary.

3. If road test is fine, you can now enjoy the added power and performance from your kit.

4. K&N Engineering, Inc., suggests checking the air filter element periodically for excessive dirt build-up. When the element becomes covered in dirt (or once a year), service it according to the instructions on the Recharger® service kit, part number 99-5050 or 99-5000

INTAKE SYSTEMS FOR VEHICLES LISTED ARE 50 STATE LEGAL. SEE KNFILTERS.COM FOR CARB STATUS ON EACH PART FOR A SPECIFIC VEHICLE.