



INTAKE SYSTEMS FOR VEHICLES LISTED ARE 50 STATE LEGAL. SEE KNFILTERS.COM FOR CARB STATUS ON EACH PART FOR A SPECIFIC VEHICLE.

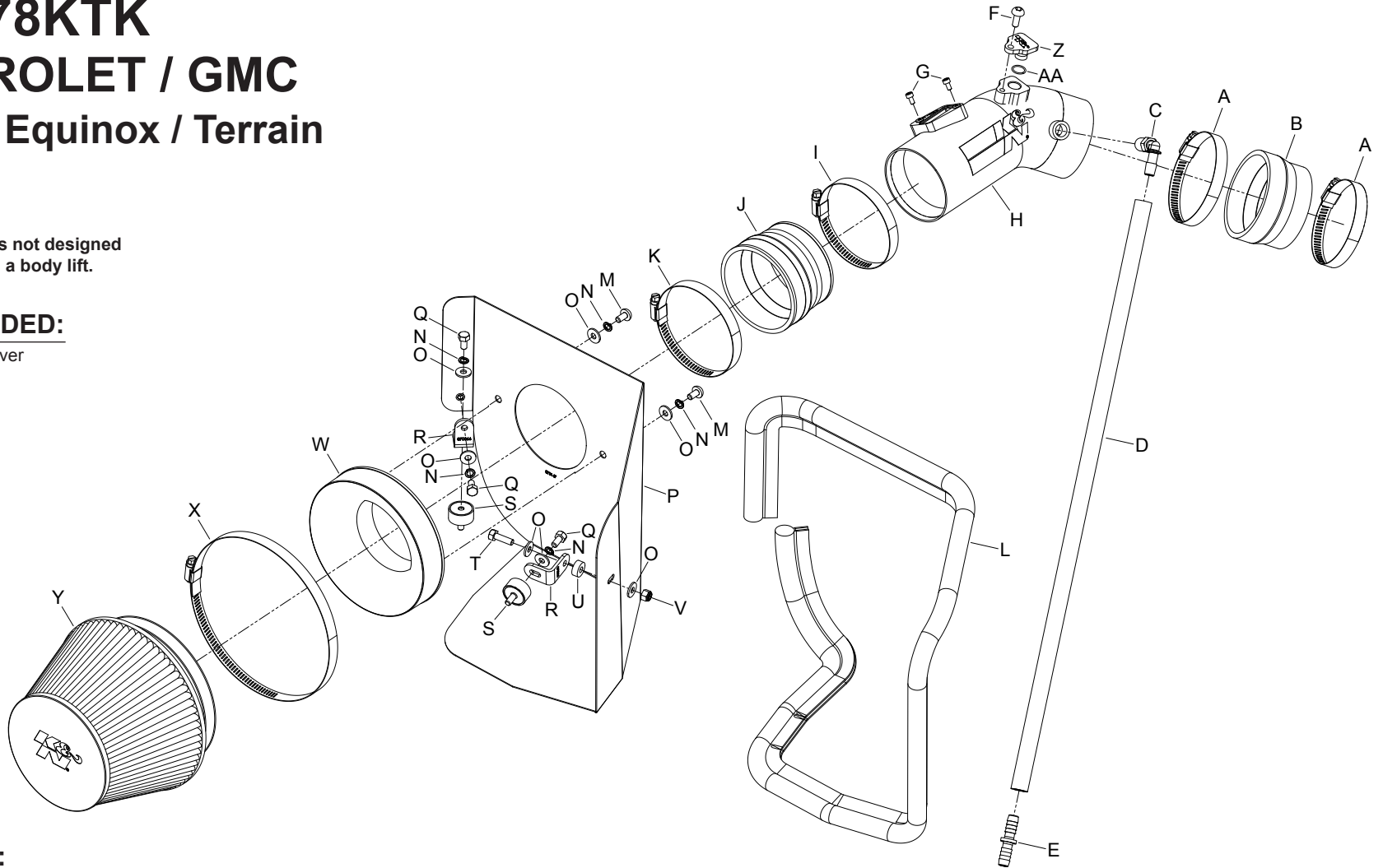
INSTALLATION INSTRUCTIONS

77-3078KTK CHEVROLET / GMC 2010-12 Equinox / Terrain V6-3.0L

NOTE: This kit was not designed to fit vehicles with a body lift.

TOOLS NEEDED:

- flat blade screw driver
- T27 torx ratchet extension
- 10mm socket
- 5.5mm socket
- 10mm wrench
- 4mm allen
- 3mm allen



PARTS LIST:

Description	Qty.	Part #	Description	Qty.	Part #	Description	Qty.	Part #
A Hose Clamp #52	2	08610	J Hose; 3-1/2" To 3-1/4" ID X 2-1/2"	1	08051	S Stud; Rubber MNT, M/F, 1/2"L	2	070228
B Hose; 3-1/4" To 3" ID X 2"L TPRD	1	08186	K Hose Clamp #56	1	08620	T Bolt; M6 X 1.00" 20MM, Hex, SS	1	07795
C Vent; 1/4NPT, 90DEG., 3/8" Hose	1	08523	L Edge Trim (55")	1	102480	U Spacer; .625"OD X .250"ID	1	06555
D Hose; 3/8" ID X 24" L, Silicone	1	08493	M Bolt; M6 X 1.00" 12MM SS	2	07794	V Nut; 6MM Nylock, Hexhead, SS	1	07512
E Vent; STRT 3/8"HOSE- 3/8"	1	08041	N Washer; M6 Split Lock Zinc	5	1-3025	W Adapter; Universal, 6" Filter 3.5"	1	21512-1
F Bolt; M6 X 1.00 X 16MM, SS	1	07730	O Washer; 6MM Flat, SS	7	08269	X Hose Clmap #104	1	08697
G Bolt; M4-0.07 8MM, A/H Cap, SS	2	07733	P Heat Shield	1	073147	Y Air Filter	1	RC-2960
H Intake Tube	1	27600TK	Q Bolt; M6 X 1.00 X 12MM, SS	3	07727	Z Block Off	1	21568
I Hose Clamp #48	1	08601	R Bracket; 69-2521, "L", SML, STL	2	070066	AA O-Ring	1	SPE-OR14

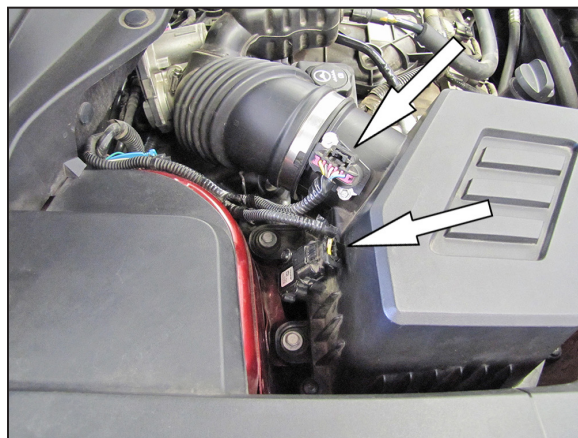
NOTE: FAILURE TO FOLLOW INSTALLATION INSTRUCTIONS AND NOT USING THE PROVIDED HARDWARE MAY DAMAGE THE INTAKE TUBE, THROTTLE BODY AND ENGINE.

TO START:

1. Turn off the ignition and disconnect the negative battery cable.
NOTE: Disconnecting the negative battery cable erases pre-programmed electronic memories. Write down all memory settings before disconnecting the negative battery cable. Some radios will require an anti-theft code to be entered after the battery is reconnected. The anti-theft code is typically supplied with your owner's manual. In the event your vehicles anti-theft code cannot be recovered, contact an authorized dealership to obtain your vehicles anti-theft code.



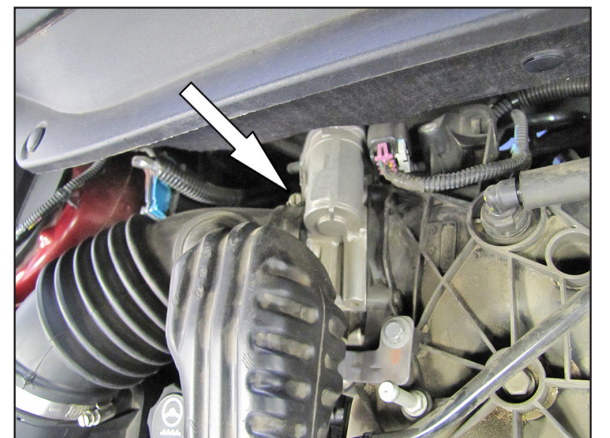
2. Remove the bolt securing the engine cover, remove the oil filler cap and then lift off the engine cover and remove it from the engine.
NOTE: reinstall the oil filler cap.



3. Disconnect the mass air sensor and humidity sensor electrical connections.
NOTE: Some vehicles may not be equipped with a humidity sensor.



4. Disconnect the crank case vent tube from the intake plenum.



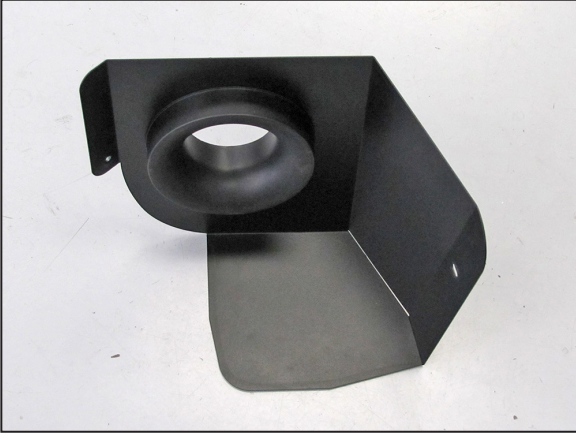
5. Loosen the hose clamp that secures the factory intake tube to the throttle body.



6. Loosen and remove the two bolts securing the air filter housing to the inner fender.



7. Lift up and remove the air box from the vehicle.
NOTE: K&N Engineering, Inc., recommends that customers do not discard factory air intake.



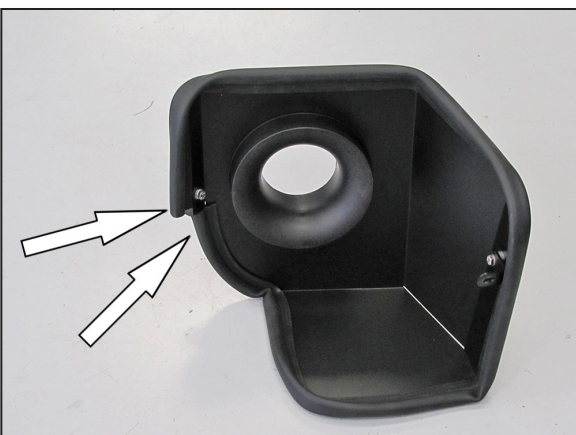
8. Install the provided filter adapter into the heat shield and secure with the provided hardware.



9. Install one of the provided "L" brackets (070066) onto the heat shield as shown using the provided hardware and spacer.
NOTE: be sure to place the provided spacer between the bracket and heat shield.



10. Install the remaining "L" bracket (070066) onto the heat shield as shown using the provided hardware.



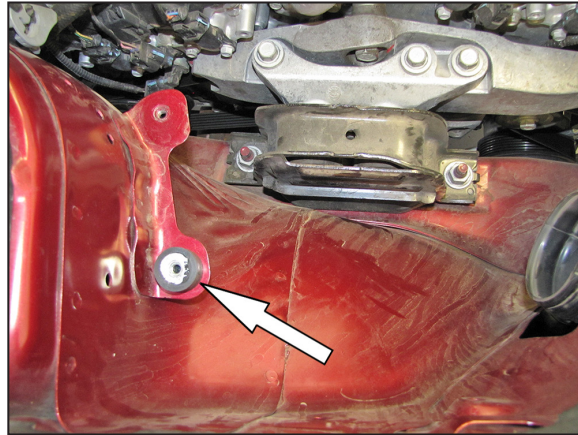
11. Install the provided edge trim onto the heat shield as shown.
NOTE: Some trimming of the edge trim will be necessary.



12. Remove the bolt shown in the core support.



13. Install the provided rubber mounted stud into the location just vacated by the bolt removed in the previous step.



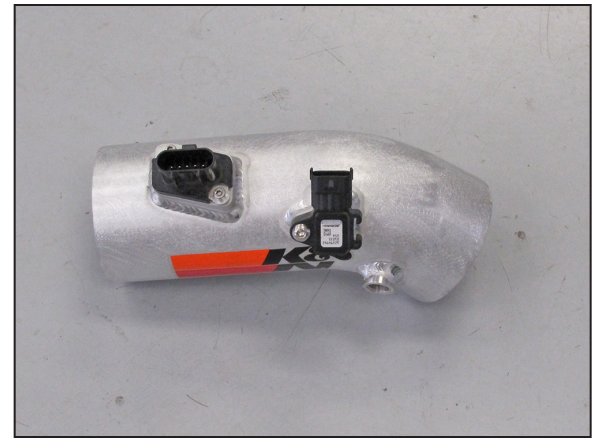
14. Install the remaining rubber mounted stud onto the air box mounting bracket as shown.



15. Set the heat shield assembly into position and secure with the provided hardware.



16. Remove the mass air sensor and humidity sensor from the factory air box.
NOTE: Some vehicles may not be equipped with a humidity sensor.



17. Install the mass air sensor and humidity sensor into the K&N® intake tube using the provided hardware.

NOTE: On vehicles not equipped with a humidity sensor, install the provided block off (21568) using the o ring and hardware provided.



18. Install the 90° vent fitting into the K&N® intake tube as shown.

NOTE: Plastic NPT fittings are easy to cross thread. Install the vent fitting "hand" tight, then turn it two complete turns with a wrench.



19. Install the provided coupling hose (08186) onto the throttle body and secure with the provided hose clamp.



20. Install the provided coupling hose (08051) onto the filter adapter and secure with the provided hose clamp.



21. Install the K&N® intake tube into the hose at the filter adapter and then into the hose at the throttle body, adjust for best fit and then secure with the provided hose clamps.



22. Remove the crank case vent tube from the valve cover port.



23. Remove the 45° crank case vent connector from the factory crank case vent tube.



24. Using the provided hose mender, attach the factory 45° crank case vent tube coupler to the provided crank case vent hose.



25. Install the crank case vent assembly onto the valve cover port and then onto the fitting installed into the K&N® intake tube as shown.



26. Install the K&N® air filter onto the filter adapter and secure with the provided hose clamp.



27. Reconnect the mass air sensor and humidity sensor electrical connections.

NOTE: Some vehicles may not be equipped with a humidity sensor.



28. Reinstall the engine cover and secure with the factory bolt and oil filler cap.



29. Reconnect the vehicle's negative battery cable. Double check to make sure everything is tight and properly positioned before starting the vehicle.

30. The C.A.R.B. exemption sticker, (attached), must be visible under the hood so that an emissions inspector can see it when the vehicle is required to be tested for emissions. California requires testing every two years, other states may vary.

31. It will be necessary for all K&N® high flow intake systems to be checked periodically for realignment, clearance and tightening of all connections. Failure to follow the above instructions or proper maintenance may void warranty.

ROAD TESTING:

1. Start the engine with the transmission in neutral or park, and the parking brake engaged. Listen for air leaks or odd noises. For air leaks secure hoses and connections. For odd noises, find cause and repair before proceeding. This kit will function identically to the factory system except for being louder and much more responsive.

2. Test drive the vehicle. Listen for odd noises or rattles and fix as necessary.

3. If road test is fine, you can now enjoy the added power and performance from your kit.

4. K&N Engineering, Inc., requires cleaning the intake system's air filter element every 100,000 miles. When used in dusty or off-road environments, our filters will require cleaning more often. We recommend that you visually inspect your filter once every 25,000 miles to determine if the screen is still visible. When the screen is no longer visible some place on the filter element, it is time to clean it. To clean and re-oil, purchase our filter Recharger® service kit, part number 99-5050 or 99-5000 and follow the easy instructions.

INTAKE SYSTEMS FOR VEHICLES LISTED ARE 50 STATE LEGAL. SEE KNFILTERS.COM FOR CARB STATUS ON EACH PART FOR A SPECIFIC VEHICLE.