



Installation Instructions

For Part Numbers:

- 200-126-1 700-450 Airaid Oiled Media Filter
- 201-126-1 701-450 SynthaMax Dry Media Filter - Red
- 202-126-1 702-450 SynthaMax Dry Media Filter - Black
- 203-126-1 703-450 SynthaMax Dry Media Filter - Blue

- 2004-05 Buick Rainer
- 2002-05 Chevrolet Trailblazer
- 2002-05 GMC Envoy
- 2003-05 Isuzu Ascender
- 2002-04 Oldsmobile Bravada
4.2L I6

Component Identification

| | | |
|-----|------------------------|---|
| 1. | Airaid Premium Filter | 1 |
| 2. | Air Dam Assembly | 1 |
| 3. | Plastic Intake Tube | 1 |
| 4. | Weather Strip 21½" | 1 |
| 5. | Urethane Hump Hose | 1 |
| 6. | Grommet Plug (In Tube) | 1 |
| 7. | M6-1x25 Hex Bolt | 3 |
| 8. | ¼-20 x 5/8" Hex Bolt | 2 |
| 9. | 3/16" Flat Washer | 3 |
| 10. | 3/16" Lock Washer | 2 |
| 11. | #60 Hose Clamp | 2 |
| 12. | Grommet | 1 |
| 13. | Hose Fitting Adapter | 1 |
| 14. | Rubber Grommet | 1 |
| 15. | Airaid Decal | 1 |



Full color instructions can be viewed on our web site at Airaid.com.

I DISCONNECT NEGATIVE (-) BATTERY CABLE

II Remove Factory Intake Assembly

- A) Using a Phillips head screwdriver, loosen the three screws holding the factory air box lid in place and remove. **See Fig#1** (Note: Bottom air box section will remain in place.)
- B) Using a flat blade screwdriver, carefully remove the air temperature sensor from the factory intake tube. **See Fig#2** (Note: Retain parts for later use)
- C) **2004 Short Wheel Base Only.** Grasp and firmly squeeze the air injection connector as shown and remove. **Fig#3**
- D) Loosen the hose clamp on the engine side of the factory intake tube using a flat head screwdriver.
- E) Remove the factory intake tube and stock air filter while leaving the lower air box section in place. **See Fig#4** (Hint: lower air box section is also the windshield washer fluid reservoir)

III Assemble the Airaid Intake System

- A) Insert the supplied rubber grommet along with the retained factory air temperature sensor into the small hole located on the rear of the curve on the Airaid tube. **See Fig#5**
- B) **2004 Short Wheel Base Only.** Insert the large rubber grommet and hose connector adapter into the hole located on the under side section of the Airaid intake tube. **See Fig#6 & 7** Use the plug grommet for all other vehicles without air injection.
- C) Assemble the Airaid intake tube and air dam with the supplied ¼" bolts and washers **Refer to Fig#8**
- D) Slide the Airaid urethane hump hose and supplied hose clamps over the curved end of the Airaid intake tube. **Refer to Fig#7**

IV Install the Airaid Intake System

- A) Place the complete Airaid intake assembly into the engine compartment and align. **Refer to Fig#9**
- B) Position the Airaid cool air dam assembly on top of the windshield washer fluid reservoir using the hardware provided. **See Fig#9** (Note: leave hardware loose for later adjustment)
- C) Mount the Airaid Premium air filter onto the end of the tube and tighten the hose clamp. **Refer to Fig#9**
- D) Slide the Airaid urethane hump hose and hose clamps over the factory air box located on the top of the engine. Make sure there is an adequate amount of urethane hose covering both the Airaid intake tube and air box. **See Fig#9**
- E) **2004 Short Wheel Base Only.** Reconnect the air injection connector **Fig#10** and the air temperature sensor connector. **Fig#11**
- F) Check alignment of complete air dam assembly and tighten remaining hose clamps and fasteners.
- G) Install weather strip on air dam. **Refer to Fig#9** (Hint: Start from one corner of the air dam and press the weather strip firmly onto the panel while working your way out to each end of the air dam. This will insure that the weather strip is installed correctly and allow for ease of installation)

VI Finishing Up

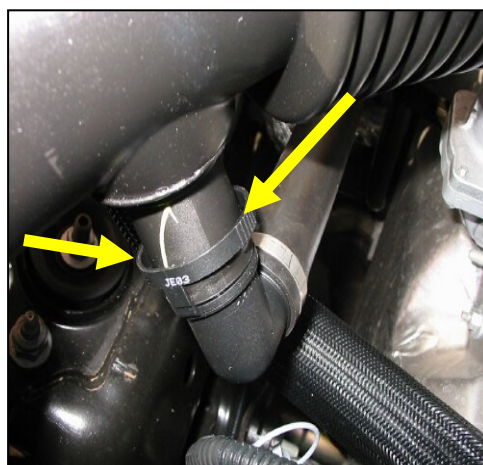
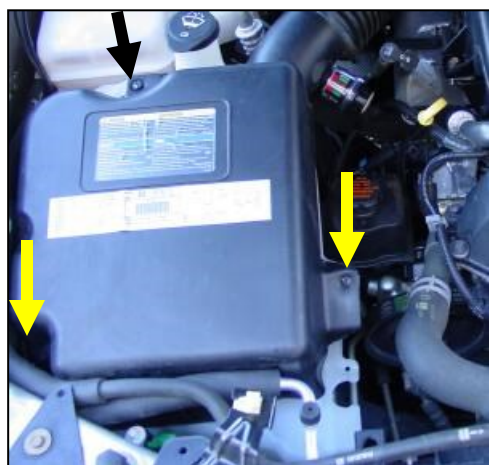
- A) Make sure that the intake path is clear of all debris!
- B) Check alignment of the Airaid intake tube and tighten all clamps, brackets, nuts & bolts.
- C) Inspect your overall work and check for clearance between air dam assembly and the hood.
- D) Re-connect the negative battery cable. Apply the Airaid Foil Decal onto the Panel as shown.

Fig#1

Fig#2

Fig#3

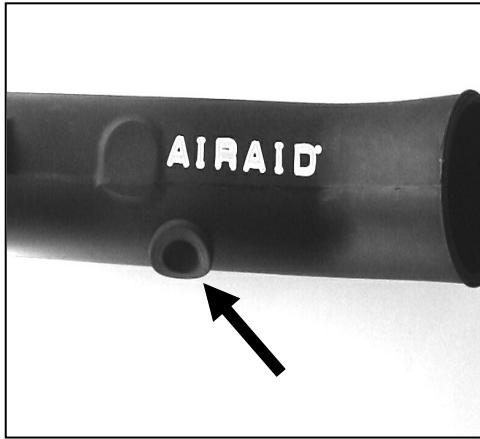
Fig#4



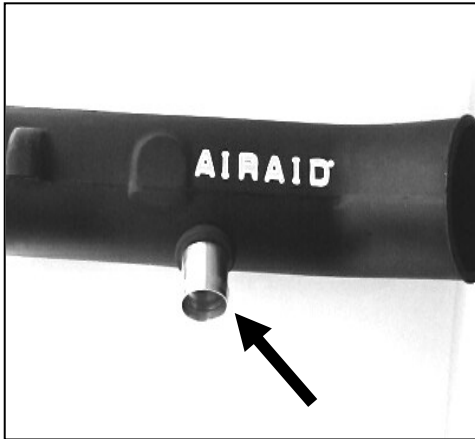
Fig#5



Fig#6



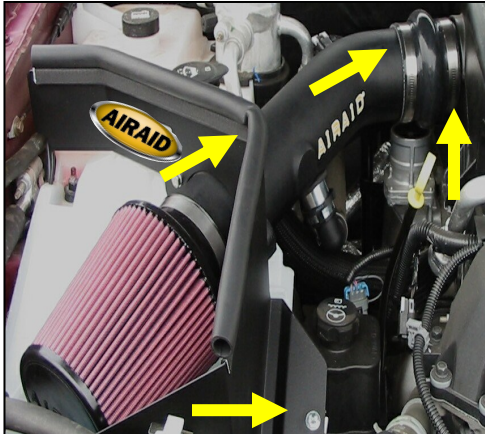
Fig#7



Fig#8



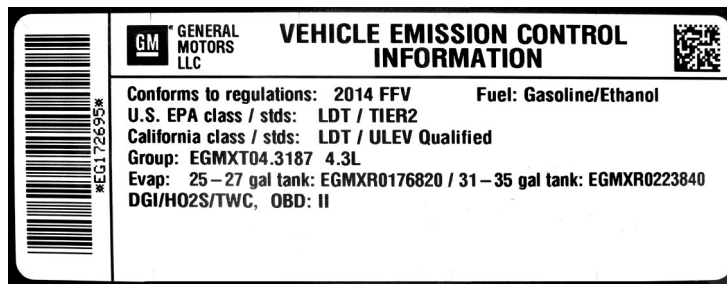
Fig#9



Fig#10



Fig#11



WARNING! If your vehicle has a Vehicle Emission Control Information decal affixed to the factory airbox, a new replacement label must be obtained and installed in a readily visible position in the engine compartment in order to remain CARB compliant. Failure to do so will prevent the vehicle from passing a smog check. Replacement labels can be ordered from your local dealership. Regulations state that the VECI label shall not be affixed to any equipment which is easily detached from the vehicle. Label placement, under the hood on a painted surface is recommended.

Thank you for purchasing the Airaid Intake System. Contact Airaid @ (800) 498-6951 8:00 AM - 5:00 PM MST weekdays for questions regarding fit or instructions that are not clear to you. Your Airaid Intake System was carefully inspected and packaged. Check that no parts are missing, or were damaged during shipping. If any parts are missing, contact Airaid. The air filter element is protected from direct exposure to water and debris; care should be taken not to drive through deep water. WATER INGESTION IS THE DRIVERS RESPONSIBILITY! The air filter is reusable and should be cleaned periodically.

FILTER IDENTIFICATION

700-450 Airaid Oiled Media
702-450 Airaid SynthaMax Dry Media - Black

701-450 Airaid SynthaMax Dry Media - Red
703-450 Airaid SynthaMax Dry Media - Blue

For your Oiled media filter we suggest using the AIRAID Filter Tune-Up Kit!



P/N 790-551 Aerosol Spray
P/N 790-550 Squeeze Spray



Do Not Oil

Synthamax Air Filters do not require oil. Service air filter as needed by cleaning with common non-petroleum all-purpose household cleaner and water. Simple Green®, Formula 409® or equivalent works great. Apply cleaner to outside of air filter and allow to soak. Then flush filter clean from the inside out with a garden hose and repeat steps if necessary. Do not apply high pressure water or air to clean filter. Allow filter to air dry and reinstall.