



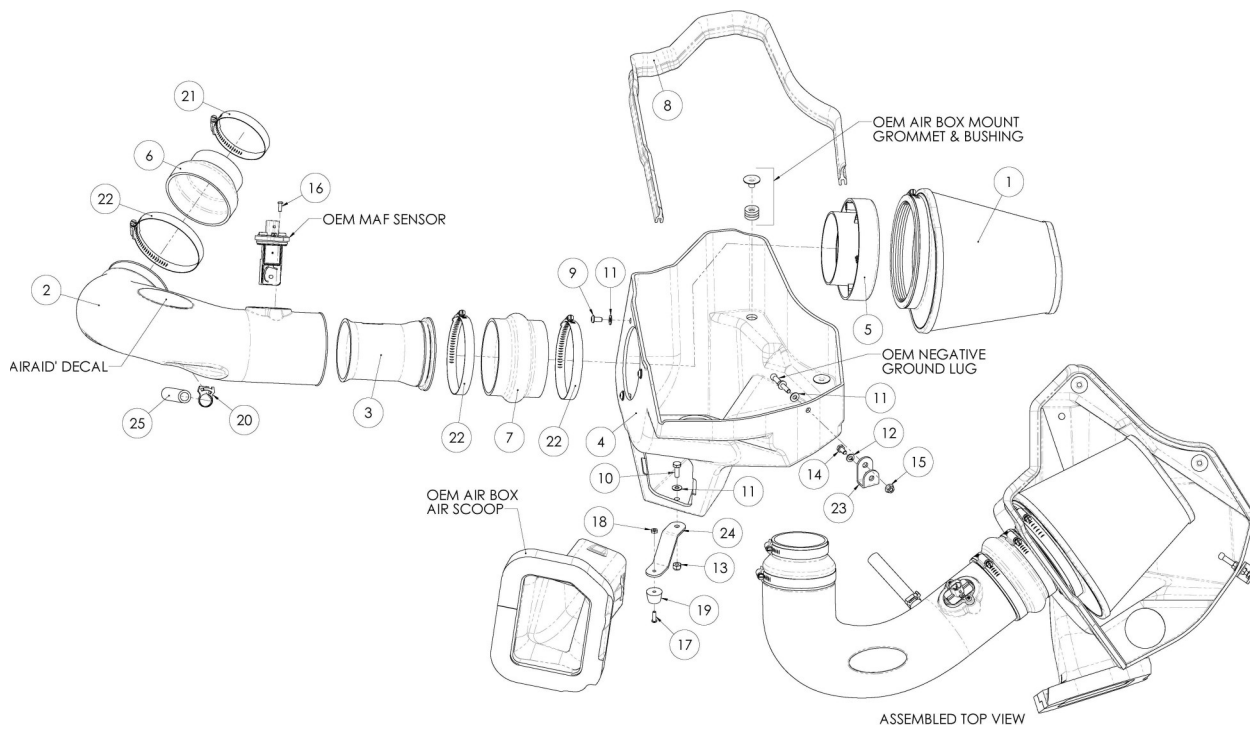
Installation Instructions

For Part Numbers:

250-242	720-242 Airaid Oiled Media Filter
251-242	721-242 SynthaMax Dry Media Filter - Red
252-242	722-242 SynthaMax Dry Media Filter - Black
253-242	723-242 SynthaMax Dry Media Filter - Blue

2010-11 Chevrolet Camaro
3.6L V6

Component Identification

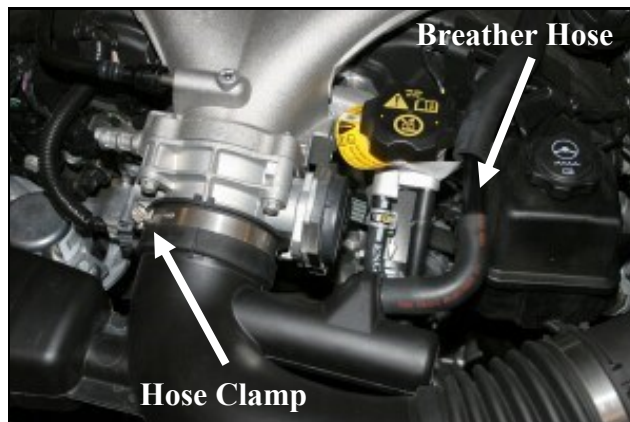


1.	Airaid Premium Filter	1
2.	Airaid Intake Tube	1
3.	Airaid MVT	1
4.	Cold Air box	1
5.	Filter Adapter	1
6.	Silicone Reducing Coupler	1
7.	Silicone Hump Hose	1
8.	Weather Strip 36"	1
9.	1/4-20 x 1/2" Button Head Bolt	3
10.	1/4-20 x 3/4" Hex Head Bolt	1
11.	1/4" Flat Washer	5
12.	1/4" Lock Washer	1
13.	1/4" Nylock Nut	1
14.	6mm x 12mm Hex Head Bolt	1
15.	6mm Flange Nut	1
16.	8-32 x 1/2" Button Head Screw	2
17.	8-32 x 5/8" Button Head Screw	1
18.	#8 Kep Nut	1
19.	Plastic Bumper	1
20.	#16 Speed Clamp	1
21.	#48 Hose Clamp	1
22.	#64 Hose Clamp	3
23.	Side Bracket	1
24.	Lower Bracket	1
25.	1/2" x 6" Hose	1
26.	Airaid Decal	1

Full color instructions can be viewed on our web site at Airaid.com.



1. **Disconnect negative battery cable.**
Remove the oil fill cap and then lift up on the front of the engine cover to remove it from the vehicle. Replace the oil cap for now to make sure nothing falls into the crankcase during the install.



2. Disconnect the hard plastic crankcase breather tube from the rubber elbow. Leave the rubber elbow connected to the factory air intake tube. Next loosen the hose clamp that secures the air intake tube to the throttle body.



3. Using a deep 10mm socket, remove and save the two nuts that secure the factory airbox to the fender well. Using a 9/32" wrench or a #20 Torx bit, remove the two screws that secure the Mass Air Flow (MAF) sensor into the air intake tube. Without disconnecting the MAF, carefully remove it from the tube and set it out of the way on top of the engine.



4. Lift the complete air intake assembly straight up and out of the vehicle.



5. Use caution not to lose the factory grommet when you remove the air intake assembly. It will be needed if you ever want to reinstall the factory intake assembly.



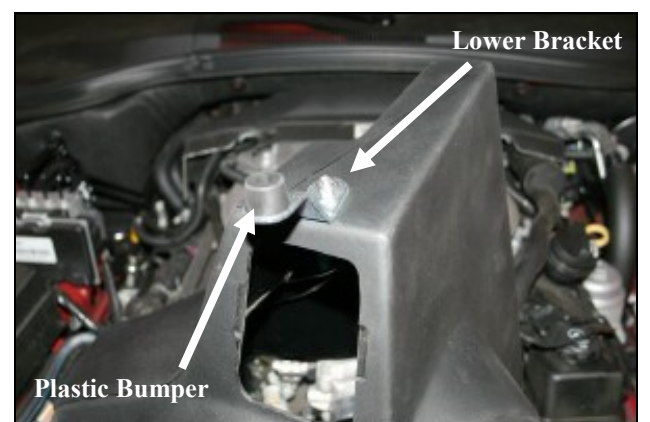
6. Squeeze the sides of the factory intake scoop and remove it from the factory airbox. It will be reused in step #10.



7. Remove the two steel inserts, and grommets from the factory airbox. Save these pieces, they will be reused in step #8.



8. Reinstall the two steel sleeves and grommets into the Airaid Cold Air Box (CAB) (#4). Next install the filter adapter (#5) into the CAB as shown using three 1/4-20 button head bolts (#9), and 1/4" flat washers (#11). Refer to the line drawing above for details.



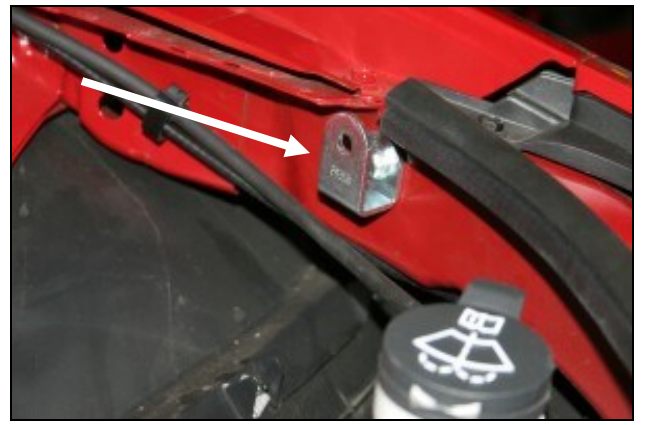
9. Turn the CAB upside down and mount the lower bracket (#24) to the bottom of the CAB using one 1/4-20x3/4" hex bolt (#10), 1/4" flat washer (#11), and 1/4" Nylock nut (#13) as shown. Next using one 8-32x5/8" button head screw (#17), and one #8 Kep nut (#18), attach the plastic bumper (#18) to the bracket as shown.



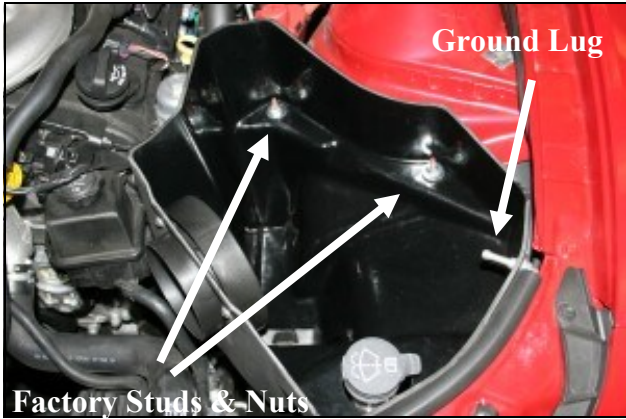
10. Reinstall the factory scoop into the Airaid CAB as shown. It will snap into place.



11. Using a 10mm wrench, remove and save the ground lug from the driver's side inner fender. It will be reused in step #13.



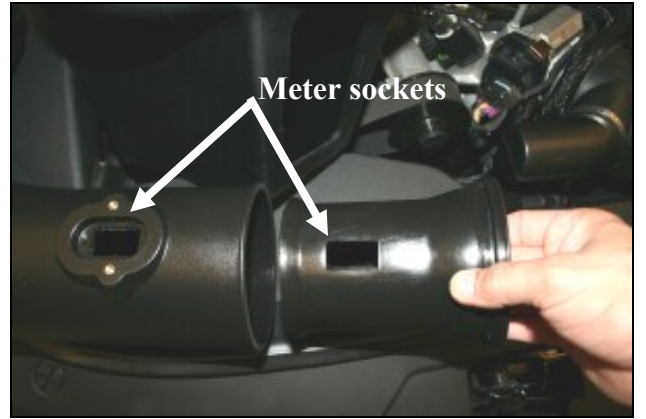
12. Replace the ground lug from step #11 with the side bracket (#23) as shown using one 6mmx12mm hex bolt (#14), and lock washer (#12).



13. Install the Airaid CAB assembly into the vehicle locating the factory grommets over the factory studs. Reinstall the factory nuts from step #3 onto the studs. Reinstall the factory ground lug thru the CAB and thru the side bracket using one flat washer (#11), and one 6mm flange nut (#15). Refer to the line drawing on the first page for reference.



14. Install the hump hose (#7) onto the filter adapter using two #64 hose clamps (#22). Next install the reducing coupler (#5) with one #48 hose clamp (#21) on the throttlebody and one #64 hose clamp (#22) on the large end.



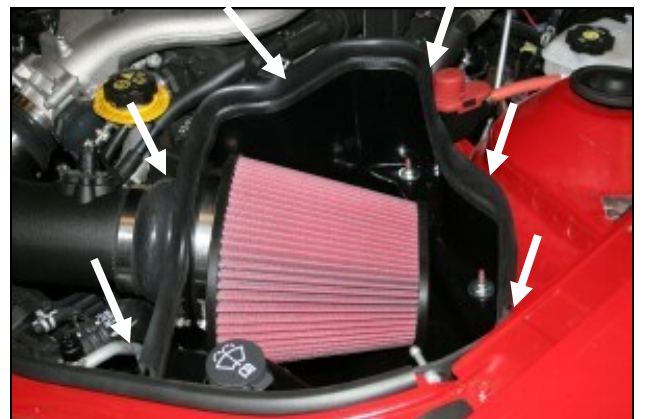
15. A) Insert the Modular Venturi Tube, (MVT), into the Airaid intake tube until it stops. Take care to align the MAF meter sockets, B) Reinstall the meter into the Intake-MVT assembly and secure using the two 8-32 button head screws (#16).



16. Install the Airaid Intake Tube (#2) into the hump hose first, and then into the reducing coupler. Adjust for fit, and tighten all four hose clamps. Apply the Airaid Bubble Decal onto the Intake Tube as shown.



17. Install the 1/2"x 6" breather hose between the nipple on the air intake tube and the hard plastic crankcase breather tube. Refer to step #2. Install one #16 speed clamp (#20) over the breather hose at the nipple as shown.



18. Install the Airaid Premium Filter (#1) onto the filter adapter and tighten the clamp. Next install the weather strip (#8) onto the top of the CAB. For ease of installation, start the front of the CAB near the radiator and work your way around towards the fender. Reinstall the engine cover and oil fill cap.

Thank you for purchasing the Airaid Intake System. Contact Airaid @ (800) 498-6951 8:00 AM - 5:00 PM MST weekdays for questions regarding fit or instructions that are not clear to you. Your Airaid Intake System was carefully inspected and packaged. Check that no parts are missing, or were damaged during shipping. If any parts are missing, contact Airaid. The air filter element is protected from direct exposure to water and debris; care should be taken not to drive through deep water. WATER INGESTION IS THE DRIVERS RESPONSIBILITY! The air filter is reusable and should be cleaned periodically.

FILTER IDENTIFICATION

720-472 Airaid Oiled Media
722-472 Airaid SynthaMax Dry Media - Black

721-472 Airaid SynthaMax Dry Media - Red
723-472 Airaid SynthaMax Dry Media - Blue

For your Oiled media filter we suggest using the AIRAID Filter Tune-Up Kit!



P/N 790-551 Aerosol Spray
P/N 790-550 Squeeze Spray



SynthaMax

Do Not Oil

Synthamax Air Filters do not require oil. Service air filter as needed by cleaning with common non-petroleum all-purpose household cleaner and water. Simple Green®, Formula 409® or equivalent works great. Apply cleaner to outside of air filter and allow to soak. Then flush filter clean from the inside out with a garden hose and repeat steps if necessary. Do not apply high pressure water or air to clean filter. Allow filter to air dry and reinstall.