

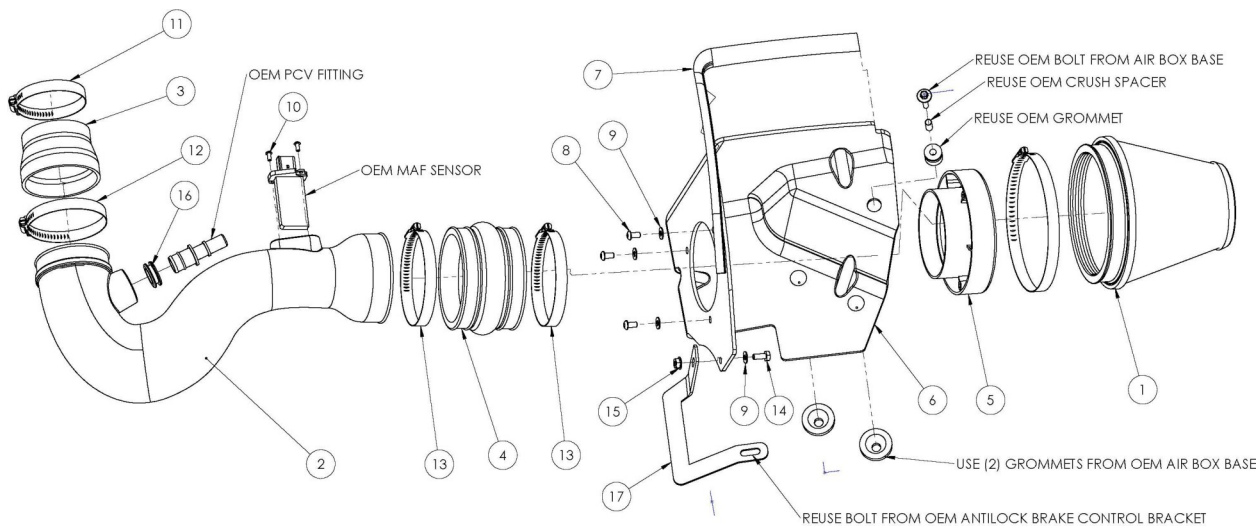


Installation Instructions

For Part Numbers:

450-245	700-466 Airaid Oiled Media Filter
451-245	701-466 SynthaMax Dry Media Filter - Red
452-245	702-466 SynthaMax Dry Media Filter - Black
453-245	703-466 SynthaMax Dry Media Filter - Blue

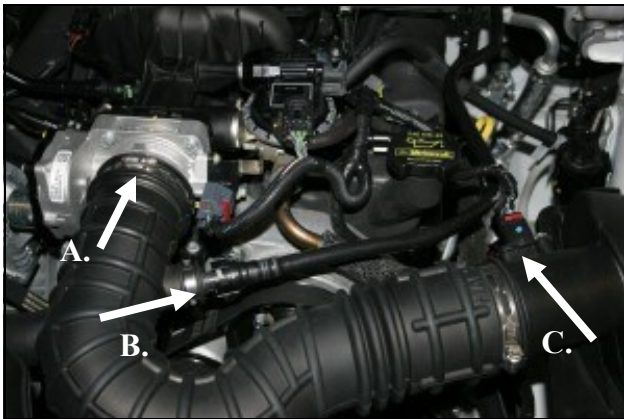
2010 Ford Mustang
4.0L V6



Component Identification

1.	Airaid Premium Filter	1
2.	Airaid Intake Tube	1
3.	3 1/2"to3"x2 1/2" Reducer	1
4.	Urethane Hump Hose	1
5.	Filter Adapter	1
6.	Cool Air Dam	1
7.	Weather Strip 18"	1
8.	1/4-20 Button Head Bolt	3
9.	1/4" Flat Washer	4
10.	8-32 x 3/8" Button Head Bolt	2
11.	#48 Hose Clamp	1
12.	#52 Hose Clamp	1
13.	#72 Hose Clamp	2
14.	1/4-20 x 5/8" Hex Bolt	1
15.	1/4-20 Serrated Nut	1
16.	Grommet	1
17.	Bracket, Front	1
18.	#20 Torx Bit	1

Full color instructions can be viewed on our web site at Airaid.com. Use the **Product Search** function to find your part number, and click **View Details**.



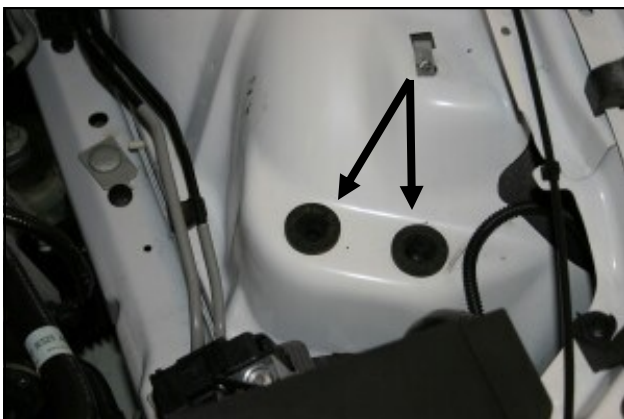
- 1. Disconnect negative battery cable.**
A) Loosen the hose clamp on the throttle body.
B) Push the green tab, and disconnect the breather hose at the factory intake tube.
C) Slide the red tab, and disconnect the Mass Air Flow sensor wiring harness.



- 2.** Remove the bolt that holds the factory airbox to the driver's side inner fender. (Save this bolt for later use in step #9).



- 3.** Remove the complete intake system as an assembly. Remove the factory grommet, and steel sleeve from the factory airbox for reuse in step #8.



- 4.** Make sure that you retain the factory grommets in the inner fender from the bottom of the factory airbox.



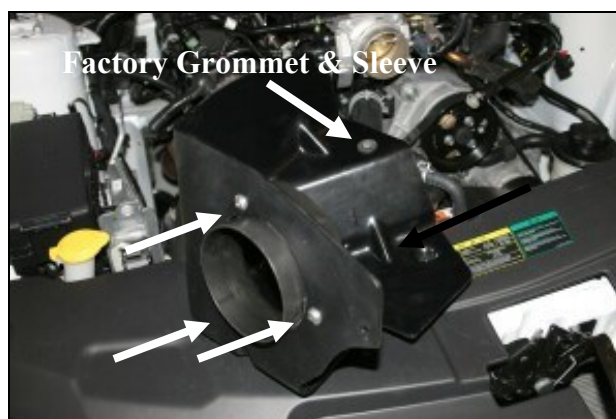
- 5.** Using the supplied #20 torx bit, remove 2 factory screws, and remove the **MAF** sensor from the factory tube. (Save the **MAF** sensor for reinstallation in step #12). Next, using a pair of side cutters, remove the metal band that holds the plastic breather fitting into the factory air intake tube. Now remove the fitting from the tube, and save it for reinstallation in step #12.



- 6.** Using a flat blade screwdriver, pry up the center of the three plastic trim anchors that are shown. Once the center is up, then pry up the bottom half of the anchors up and out of the hole and save them for reinstallation in step #10.



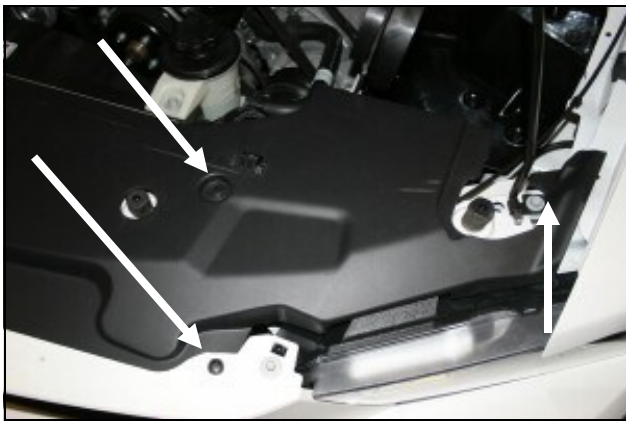
- 7.** Lift up the corner of the plastic trim from step #6 to gain access to the bolt that secures the bracket for the anti lock brake manifold. Remove the bolt and install the front bracket (#17) as shown. Replace the factory bolt and leave it just snug for now.



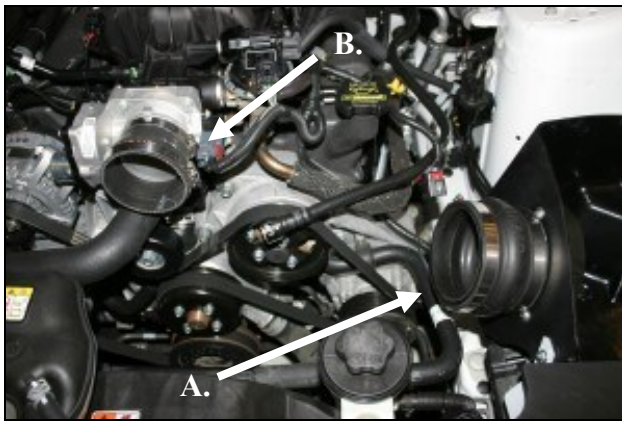
- 8.** Install the filter adapter into the Cool Air Dam (#6) using three 1/4-20 button head bolts (#8), and three 1/4" flat washers (#9) as shown. Next install the factory grommet and steel sleeve removed in step #3 into the hole in the CAD.



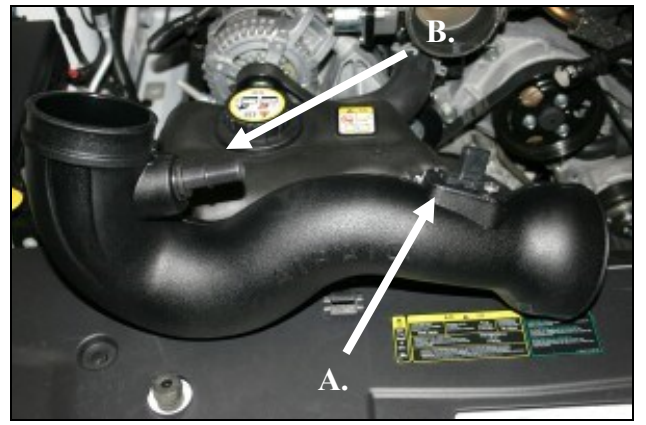
- 9.** Install the CAD into the vehicle aligning the locating pins on the bottom of the CAD into the factory grommets in the fender. Reinstall the factory bolt from step #2 into the steel sleeve and grommet. Next install the 1/4-20x5/8" hex bolt (#14) thru one 1/4" flat washer (#9), thru the CAD, and thru the bracket securing it with one 1/4" serrated nut (#15). Adjust for fit and then tighten the bolt on the anti lock brake bracket.



10. Reposition the plastic cover and then reinstall the three plastic trim anchors removed in step #6 into their respective holes and push down the center to secure the plastic trim panel.



11. A.) Install the hump hose (#4) onto the filter adapter as shown using two #72 hose clamps (#13). Leave the clamps loose for now. B.) Install the supplied reducing coupler onto the throttlebody as shown using one #48 hose clamp (#11), and one #52 hose clamp (#12). Tighten only the hose clamp on the throttlebody at this time.



12. A.) Install the MAF sensor removed in step #5, into the Airaid Intake Tube (#2). Use the two supplied 8-32 button head bolts (#10), to securely fasten the MAF sensor. **Do Not Use The Factory Screws!** B.) Install the provided grommet (#16) into the intake tube and then install the factory fitting removed in step #5 into the grommet as shown.



13. Install the intake tube assembly into the hump hose first, and then into the throttlebody coupler. Adjust for fit, and then tighten the three remaining hose clamps. Next, reconnect the MAF sensor wiring harness and lock the red tab. Now reconnect the factory breather tube to the factory fitting.



14. Install the Airaid Premium Filter (#1) onto the filter adapter as shown and tighten the clamp. Now install the supplied weather strip (#7) onto the top of the CAD as shown starting near the radiator and working towards the left fender.

15. Double check your work!

Make sure there is no foreign material in the intake path. Make sure all clamps, hoses, bolts, and screws are tight. Double check the hood clearance.

Reconnect the negative battery cable!

Thank you for purchasing the Airaid Intake System. Contact Airaid @ (800) 498-6951 8:00 AM - 5:00 PM MST weekdays for questions regarding fit or instructions that are not clear to you. Your Airaid Intake System was carefully inspected and packaged. Check that no parts are missing, or were damaged during shipping. If any parts are missing, contact Airaid. The air filter element is protected from direct exposure to water and debris; care should be taken not to drive through deep water. **WATER INGESTION IS THE DRIVERS RESPONSIBILITY!** The air filter is reusable and should be cleaned periodically.

FILTER IDENTIFICATION

700-466 Airaid Oiled Media
702-466 Airaid SynthaMax Dry Media - Black

701-466 Airaid SynthaMax Dry Media - Red
703-466 Airaid SynthaMax Dry Media - Blue

For your Oiled media filter we suggest using the AIRAID Filter Tune-Up Kit!



P/N 790-551 Aerosol Spray
P/N 790-550 Squeeze Spray



SynthaMax

Do Not Oil

Synthamax Air Filters do not require oil. Service air filter as needed by cleaning with common non-petroleum all-purpose household cleaner and water. Simple Green®, Formula 409® or equivalent works great. Apply cleaner to outside of air filter and allow to soak. Then flush filter clean from the inside out with a garden hose and repeat steps if necessary. Do not apply high pressure water or air to clean filter. Allow filter to air dry and reinstall.