



# INSTALLATION INSTRUCTIONS



2010-2014 VOLKSWAGEN JETTA 2.0L TDI | PART NO. 19166

## BILL OF MATERIALS:



- 1. INLET PIPE ASSEMBLY
- 2. MUFFLER ASSEMBLY



WEAR SAFETY GLASSES



READ INSTRUCTIONS THOROUGHLY BEFORE INSTALLING PRODUCT

## SHOP SUPPLIES:



SPRAY LUBRICANT

To ease removal of existing exhaust components (especially on older vehicles) spray penetrating lubricant on all fasteners and hangers/insulators that will be loosened or removed and let soak before disassembly.

## HARDWARE KIT:

- 1.[1] 2.50" Clamp

## MINIMUM REQUIRED TOOLS:



15mm, 19mm



Hanger Tool (Or Pry Bar)



Sawzall or other cutting device

## MAGNAFLOW RECOMMENDS PROFESSIONAL INSTALLATION ON ALL THEIR PRODUCTS



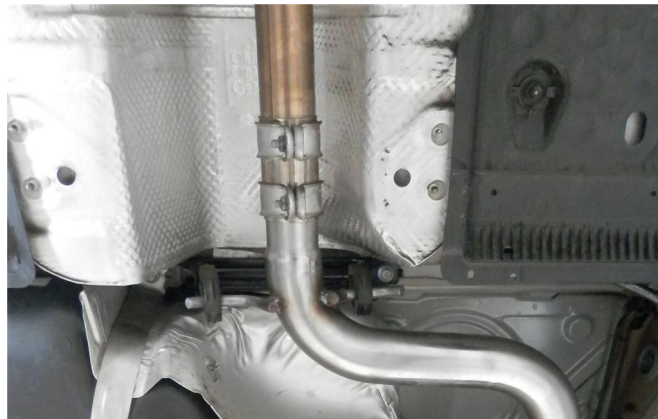
**WARNING:** When working on, under, or around any vehicle exercise caution. Please allow the vehicle's exhaust system to cool before removal, as exhaust system temperatures may cause severe burns. If working without a lift always consult vehicle manual for correct lifting specifications. Always wear safety glasses and ensure a safe work area. Serious injury or death could occur if safety measures are not followed.

**ATTENTION:** Always install any supplied band or U-bolt clamps to the proper torque specifications of 40-45 ft-lbs for band clamps and 30-35 ft-lbs for U-bolt clamps. Over tightening will result in the clamp breaking and will NOT be warranted by MagnaFlow.

## INSTALLATION INSTRUCTIONS



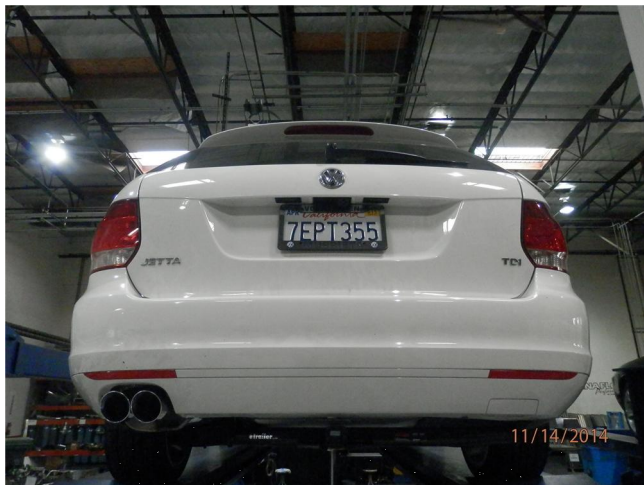
**Step 1.** To remove the OEM exhaust system you will need to cut it into two pieces just above the rear sway bar. Once the exhaust is cut you can begin removing it by loosening the clamp located behind the catalytic converter (just above the cross brace). Working rearward, disengage all welded hangers from the rubber insulators. Do not damage or discard the rubber insulators or fasteners as they will be re-used to mount the new system. You can now remove the exhaust from the vehicle.



**Step 2.** Begin installation of the new system by fastening the Inlet pipe Assembly to the catalytic converter using the OEM clamp and fitting the hangers into the rubber insulators (Leave all clamps and fasteners loose for final adjustment of the complete system.)



**Step 3.** Next Install the Muffler Assembly to the inlet Pipe Assembly using the supplied 2.50" clamp. Insert the hanger into rubber insulator.



**Step 4.** Once a final position has been chosen for the new exhaust system, evenly tighten all clamps from front to rear using the torque specifications on page one of the instructions. Inspect all fasteners after 25-50 miles of operation and re-tighten if necessary.